

# St. Anne's Catholic Primary School



Headteacher: Mrs E Darnell

Tel: 01772 422769 E-mail: head@st-annes.lancs.sch.uk

14/03/2025

## Year 2 Class Assembly

This morning Year 2 led us in a lovely class assembly on the theme of 'Friendship'. They helped us to understand how to be a good friend, spoke with confidence and sang beautifully.

Well done to all the children and thank you to the Year 2 staff team for helping the children to prepare for this.



## Reflection for the week



During the  
*Season  
of Lent*  
contemplate  
your heart and  
look at our  
world with  
*Hope.*

## Parents Evening

We are looking forward to our Parents Evening next week on Tuesday 18<sup>th</sup> March.

This is an important opportunity for teachers to discuss your child's progress with you as well as sharing their work.



## Windrush Performances

Yesterday, we had the pleasure of welcoming the Blue Elephant Theatre Company, who performed a short drama exploring the experiences of the Empire Windrush passengers traveling from the Caribbean to England in 1948. Through storytelling and an immersive performance, the actors brought to life the hopes, challenges, and resilience of those who made the journey. The children listened attentively, participated enthusiastically, and

shared thoughtful responses, demonstrating a understanding and empathy for this important part of history.

## Lenten Challenge

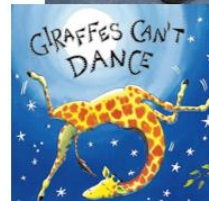
This Lent our Faith Ambassadors are inviting donations for the Food Bank but in a different way...

We are inviting each child to bring in a **box of cereal** on **Wednesday 2<sup>nd</sup> April**. We are then going to attempt to create a whole school 'cereal box domino rally'!! All donations will then be taken to the Leyland Food Bank to support families in our local community.





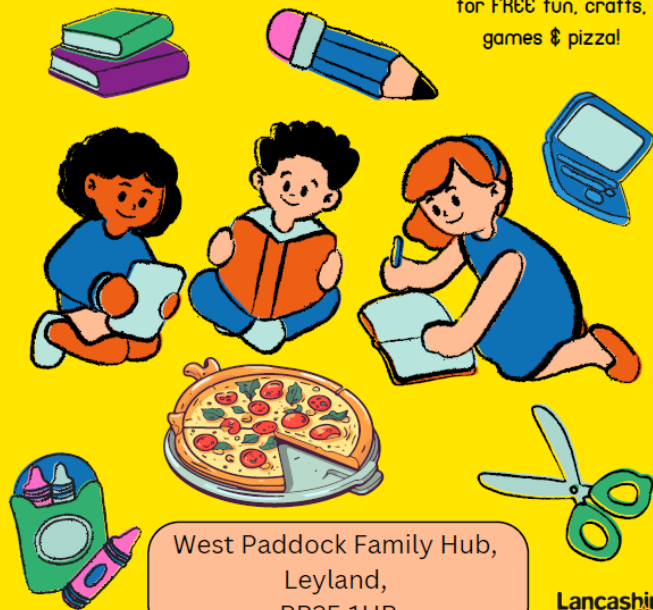
Reception and  
Year 1 Story  
Club proving  
giraffes actually  
*can* dance!



## After School Warm & Welcome

LANCASHIRE  
**FAMILY  
HUBS  
NETWORK**

Join us after school on  
the following dates: 26th  
Feb, 5th, 12th & 19th  
March  
for FREE fun, crafts,  
games & pizza!



West Paddock Family Hub,  
Leyland,  
PR25 1HR

Lancashire  
County  
Council

## On Parentpay :

### Clubs this half term :

**Netball Yrs 5 & 6:** 3.20 – 4.15pm : Monday 24<sup>th</sup>  
February – Monday 31<sup>st</sup> March

**Multisports Yrs 1 & 2:** 3.20 – 4.15pm : Wednesday  
26<sup>th</sup> February – Wednesday 2<sup>nd</sup> April

**PASTA Cookery Club Yrs 2 & 3** 3.20 – 4.30pm  
Thurs 6<sup>th</sup> March - Thursday 3<sup>rd</sup> April (3 places  
remaining) All children must be accompanied by a  
parent/carer t these sessions.

**Multisports Yrs 3 & 4:** 3.20 – 4.15pm : Thurs 27<sup>th</sup>  
February – Thursday 3<sup>rd</sup> April

**Story Club EYFS & Yr1** 3.20 – 4.15pm 27<sup>th</sup> February  
– 27<sup>th</sup> March

**Choir Yrs 3,4,5 & 6 :** 3.20 – 4.15 :Wednesday 8<sup>th</sup>  
January – Wednesday 12<sup>th</sup> February

### **Other payment items –**

Towerwood Residential Year 6 : 16<sup>th</sup> – 20<sup>th</sup> June

**Reception Class Trip to Smithills Farm – 26<sup>th</sup> March**

**St Mary's High School** has been given the opportunity to host a new project. **No Whispers** Community Interest Company has been awarded a National Lottery Community Fund to deliver a child exploitation and safeguarding project in South Ribble, called Right Here, Right Now.

There is an opportunity for parents, carers and volunteers to find out more about the issues of child exploitation and how we can prevent children and young people from becoming victims of abuse. These workshops will be hosted at St Mary's Catholic High School (PR25 1BS).

Three workshops are taking place, with an introduction session on:  
Wednesday 19th March 6.00 – 7.30pm

With two more workshops on: Wednesday 26th March. & Wednesday 2nd April.  
For more information please contact St Mary's School Office on 01772 421909



**Diary Dates** *We do like to provide diary dates as far in advance as possible but please keep checking as some dates may change and new dates will be added*

**Tuesday 18<sup>th</sup> March : Parent's Evening 2.30 – 7.30pm**

**Wednesday 19<sup>th</sup> March – Monday 24<sup>th</sup> March : Book Fair 3.20 – 4.15 in the Main Entrance**

Friday 21<sup>st</sup> March : Celebration Assembly : All Parents welcome to attend

Wednesday 26<sup>th</sup> March : Reception Class Trip to Smithills Farm

**Friday 28<sup>th</sup> March Non-uniform day : Easter Egg donations for the Easter Bingo**

**Friday 28<sup>th</sup> March : Rock Steady Performance 9.30am**

**Monday 31<sup>st</sup> March : Years 3 & 4 Easter Production 10am & 6pm**

**Tuesday 1<sup>st</sup> April : Easter Bingo 5.30pm**

Wednesday 2<sup>nd</sup> April : Lenten Mass in school

**Wednesday 2<sup>nd</sup> April : Lenten Cereal Box domino challenge**

Thursday 3<sup>rd</sup> April : Year 1 Class Assembly

Friday 4<sup>th</sup> April : Celebration Assembly : All Parents welcome to attend

**Friday 4<sup>th</sup> April : School Talent Show for pupils**

Friday 4<sup>th</sup> April : [School closes at 3.20pm for the Easter holidays \(4.30pm ASC\)](#)

Tuesday 22<sup>nd</sup> April : School opens for the Summer term at 8.45am (7.45am Breakfast Club)

Wednesday 7<sup>th</sup> May: Reception Class Welcome Wednesday 2.30pm – parents welcome!

**After school club** – Ad-hoc places available!

**Good news – we are currently able to offer a limited amount of ad-hoc sessions at After School Club.** These sessions can be booked at late notice or before 2.30pm on the day. Sessions are from 3.20pm and close at 6.00pm. Please contact the office if you need to arrange a space for your child. Places will be given on a 'first come, first served' basis.

The charge for the ad-hoc service will be £9.00 per session and must be paid for at the time of booking via Parent Pay . These places are intended for one off places or exceptional circumstance occasions where a child cannot be collected at the usual time.



# Spring 2025 Newsletter

FACE delivers online support via zoom for parents across the UK  
Talks are 90 minutes long, £24 each - Book Online at [facefamilyadvice.co.uk](http://facefamilyadvice.co.uk)



Schools can now buy a  
**FACE School Annual Membership**  
which means **ALL** parents and **ALL** staff  
get unlimited **FREE** access to **ALL** 16 parent talks

Thursday  
24th April  
19:00 - 20:00  
**FREE**



**Responding to Angry  
Behaviour**  
What can we do in the moment?

Tuesday  
18th March  
10:00 - 11:30  
£24



**Anxiety Explained**  
Anxiety, especially in our young is rising.  
This session explains what it is, why it  
happens and how you can help.

Thursday  
3rd April  
10:00 - 11:30  
£24



**Supporting a Child with ADHD**  
Challenging the stereotypes and giving  
practical interventions. Clear explanation  
of the condition in all its forms and  
extremely useful advice.

Tuesday  
3rd April  
19:00 - 20:30  
£24



**Improving Family  
Communication**  
How to reduce the shouting and  
arguing and start the talking.

[facefamilyadvice.co.uk](http://facefamilyadvice.co.uk)

[info@facefamilyadvice.co.uk](mailto:info@facefamilyadvice.co.uk)



# Spring Timetable

all sessions delivered live online via zoom £24 each 90 minutes long  
book online at [facefamilyadvice.co.uk](http://facefamilyadvice.co.uk)

Anxiety Explained	18 MAR 7pm
What is ACT?	20 Mar 7pm
Understanding the Teenage Brain	24 MAR 10am
Supporting Healthy Sleep	24 MAR 7pm
Decreasing Depression	25 MAR 10am
Raising Self-Esteem	25 MAR 7pm
AUTISM: Improving Communication	2 APR 10am
Supporting a Child with ADHD	3 APR 10am
Improving Family Communication	3 APR 7pm
Supporting Healthy Screen Use	7 APR 10am
Facing Defiance	7 APR 7pm
Anxiety-Based School Avoidance	8 APR 10AM
Understanding Anger	8 APR 7pm
Anxiety Explained	14 APR 10am
Cannabis & Ketamine Awareness	14 APR 7pm

# Messages not to be missed!



St. Mary's Community  
Centre Broadfield Drive  
Leyland PR25 1PD

## WHAT'S ON... Regular Events

MONDAY	9.30-NOON	COFFEE LOUNGE
	9.00-NOON	MUMS & TOTS
	1.15-3.30PM (EVERY 2 WEEKS)	WIDOWS WELCOME
TUESDAY	9.30-NOON	COFFEE LOUNGE
WEDNESDAY	11AM-2PM (October-April)	WARM SPACE
	12 NOON (1 <sup>ST</sup> WED OF MONTH)	COMMUNITY LUNCH
THURSDAY	9.30-NOON	COFFEE LOUNGE
	9.00-10.30AM	SLIMMING WORLD
	11.15-12.15PM	DO FITNESS
	1.00-3PM (2 <sup>ND</sup> THURS OF MONTH. BOOKING ESSENTIAL)	MUSIC & AFTERNOON TEA
	7.00-11PM (LAST THURS OF MONTH)	CEILIDH CLUB
FRIDAY	9.30-NOON	COFFEE LOUNGE
	10.00-12NOON	MANKIND MEN'S GROUP
SATURDAY	8.30-10.30AM (1 <sup>ST</sup> SATURDAY of the MONTH)	SATURDAY MEN'S PRAYER GROUP



St. Mary's Community Centre  
Broadfield Drive  
Leyland PR25 1PD

## WHAT'S ON...

ALL FUNDRAISING EVENTS FOR THE COMMUNITY CENTRE		
1.	<b>JIMMY CRICKET</b> Charity Fundraiser. Comedy laughter show. Music. Bar. Tickets £10 online & from the Centre.	Saturday 29 <sup>th</sup> March 7.30 for 8pm
2.	<b>MOTHERS' DAY AFTERNOON TEA</b> Music & Raffle. Families welcome. Tickets £5 from the Centre.	Sunday 30 <sup>th</sup> March 2-4pm
3.	<b>SOUL NIGHT with MELANIE WAITE</b> Amazing vocalist. Bar. Raffle. Tickets £10 QR code/from the Centre.	Friday 4 <sup>th</sup> April 7 for 7.30pm
4.	<b>FAMILY EASTER BINGO</b> Free hot dogs, drinks, snacks. Great prizes. Raffle.	Friday 11 <sup>th</sup> April 5 for 5.30pm
5.	<b>HARPER BROTHERS</b> Charity Fundraiser. Comedy laughter show. Music. Bar. Tickets £7 special offer from the Centre & online.	Saturday 3 <sup>rd</sup> May 7.15 for 8 pm
6.	<b>COMMUNITY QUIZ NIGHT</b> Teams of up to 5 people. £1 per person on the night. Cash prize. Bar. Special Fundraising Prize Raffle.	Friday 16 <sup>th</sup> May 7 for 7.30pm
7.	<b>'COLOURS' FASHION SHOW</b> Fabulous clothes. Private changing room. Catwalk with models. Raffle. Bar. Tickets £6 from the Community Centre.	Friday 13 <sup>th</sup> June 7 for 7.30pm
8.	<b>VARIETY SHOW tba</b> Joint fundraiser for the Community Centre & Blackpool Equity.	June or Sept
9.	<b>An Evening with SHAUN WALLACE</b> Aka "The Dark Destroyer" from 'The Chase' Fundraiser for the Community Centre/SLEAP Tickets £15 from the Community Centre.	Saturday 11 <sup>TH</sup> October (Time tba)

## Applications for free School Meals

If your child is eligible for free school meals, please do register them to ensure their entitlement begins as soon as possible. Please click on the link below to access the registration page

<http://www.lancashire.gov.uk/children-education-families/schools/free-school-meals.aspx>

**If eligible, you will also receive shopping vouchers for holiday periods.**

Please note:

This is separate to the free school meals that children in Reception Class, Year 1 and Year 2 receive.

# Let's Talk about School Attendance



Mrs Darnell & Mrs Sumner warmly invite you into school to talk to them and answer your questions about attendance

**MOMENTS  
MATTER,  
ATTENDANCE  
COUNTS.**

We are offering 2 dates:

**Wed 5<sup>th</sup> March 9-10am**  
**Tues 11<sup>th</sup> March 2.15-3.15pm**

St Anne's Catholic Primary School  
In Noah's Nest

For further info contact: 01772 422769 / 07541 692775 or email  
[l.sumner@st-annes.lancs.sch.uk](mailto:l.sumner@st-annes.lancs.sch.uk) / [head@st-annes.lancs.sch.uk](mailto:head@st-annes.lancs.sch.uk)  
[bursar@st-annes.lancs.sch.uk](mailto:bursar@st-annes.lancs.sch.uk)



## PEER SUPPORT FOR PARENTS/CARERS OF NEURODIVERGENT YOUNG PEOPLE

Supporting YOU to support your Young Person with their  
Mental Health & Wellbeing

An opportunity to connect with other parents/carers, share experiences, exchange practical advice, mutual support and signpost. Groups are professionally supported and held in relaxed & confident spaces.

**12:30pm - 2pm**

2nd & 4th Tuesday of the Month  
February Tuesday 25th

March Tuesday 11th & 25th

April Tuesday 8th & 22nd

May Tuesday 13th & 27th

June Tuesday 10th & 24th

July Tuesday 8th & 22nd

Venue: Key Unlocking Futures, Unit 2, Balfour Court, Leyland,  
PR25 2TF

For more information contact Niki (Facilitator) on [07580358080](tel:07580358080) /  
[niki@keycharity.org.uk](mailto:niki@keycharity.org.uk)

Join our Facebook  
Community



For details of our other Parent  
Peer support groups [scan here](#) ->



[www.keycharity.org.uk](http://www.keycharity.org.uk)  
Registered Charity Number 115477

## SCHOOL UNIFORM

We are having a uniform clear  
out! All uniform is **FREE!**



### WE HAVE LOTS OF

Cardigans mainly sizes 26+

Shirts ages 6+

Grey shorts (ready for the warmer weather)

**IF YOU HAVE ANY UNIFORM THAT YOU CAN  
DONATE, PLEASE HAND THIS IN AT THE SCHOOL  
OFFICE!**

**WE NEED:**

Ties

PE Hoodies

Jumpers size 28+

If you require any uniform items please call or text  
Lisa on 07541 692775 alternatively you can email on  
[l.sumner@st-annes.lancs.sch.uk](mailto:l.sumner@st-annes.lancs.sch.uk)

**WE NEED YOUR HELP!**

The SEND Partnership in Lancashire would like to include your artwork, words or similar in their new SEND Strategy which will be published later this year

**YOUR ENTRY NEEDS TO ANSWER THE QUESTION:**

**WHAT MAKES ME FEEL INCLUDED?**

You can create a picture, a quote, a voice recording, a short poem – however you wish to express yourself!

**EMAIL YOUR ENTRIES WITH YOUR FIRST NAME AND AGE TO:**  
[SENDPartnership@lancashire.gov.uk](mailto:SENDPartnership@lancashire.gov.uk)

THERE WILL BE A £20 HIGH STREET VOUCHER FOR WINNING ENTRIES IN THE FOLLOWING AGE RANGES:  
EARLY YEARS, PRIMARY, SECONDARY AND 16+  
THOUGH ALL ENTRIES MAY BE USED

**DEADLINE: 31ST MARCH 2025**

Lancashire SEND Partnership logo

## Communication

Our School website contains a wealth of information about school, our routines and our policies. Newsletter links are emailed and App messaged weekly on a

Friday and are also available on the school website. If you have any questions about anything, please do contact the school office. If you wish to speak with your child's class teacher, please contact the school office and an appointment can be arranged. We believe in working closely with children, parents and families and welcome your ideas and views - please do share with us!



## School Library

Our school library is open at the following times:

**Wednesday – 3.20 - 3.45pm (with parents)**

**Friday – 8.30 – 8.40am (with parents)**

**Friday Lunchtimes: 12.15pm – 12.55pm**

Thank you to Mrs Prytherch, Miss Whittle and the English Ambassadors for making this possible.



## ATTENDANCE WHAT THE NEW RULES MEAN FOR ME

WITH EFFECT FROM 19 AUGUST 2024

I'm a single parent of one child and we want to go on holiday for a week.

Your holiday will not be authorised and you must talk to the school before you book anything.

Because your child will miss 5 school days you will be given a penalty notice fine.

The fine is £160 but if you pay it in 21 days it will be reduced to £80.

1

£160



FOR EVERY CHILD A PENALTY IS GIVEN

2



4 children & 1 parent = £640  
Reduced to £320 if paid in 21 days

3

10 IN 10

If your child is absent for 10 or more sessions in 10 weeks and their absences are unauthorised, the school will consider prosecution.

1

DAY =

2

SESSIONS

FOR A FAMILY OF TWO PARENTS



4 children & 2 parents  
= £1280  
Reduced to £640 if paid in 21 days

4

If in any period of not more than 3 years, your child has a 2nd and 3rd leave of absence or pattern of irregular attendance...

5



2ND TIME

2 parents and...  
1 child - £320  
2 children = £640  
3 children = £960  
4 children = £1280

No discount for early payment

3RD TIME

A penalty notice fine will not be given.

Your case will be taken to court.

A magistrate can fine each parent £2500 for each child.

1 parent & 4 children = £10,000  
2 parents & 4 children = £20,000



FOR MORE INFORMATION, VISIT



[gov.uk/government/publications/working-together-to-improve-school-attendance](https://www.gov.uk/government/publications/working-together-to-improve-school-attendance)