

St. Anne's Catholic Primary School



Headteacher: Mrs E Darnell

Tel: 01772 422769 E-mail: head@st-annes.lancs.sch.uk

12/12/2025



Reflection for the week

It's been a busy week this week! KS2 really enjoyed The Octagon's performance of **A Christmas Carol**. The behaviour of all the children was exemplary and all the staff there were so proud of them! Our **Christmas dinner** yesterday was a huge success ! Making and serving over 200 Christmas dinner is no easy task – **a huge thank you** to Rosemary, Julie and Jill for all their hard work!!! Our younger pupils have really enjoyed their visit to see **The Enormous Crocodile** at the Lowry theatre this morning – there'll be some tired children tonight! **Thank you** to all the Governors, Parents, Grandparents and Friends of the school who volunteered their time to accompany the children to the theatre – we really do appreciate your help! **The Raggedy King** rehearsals have really taken off this week and I am so excited to see the Dress rehearsal on Monday. If you haven't purchased your tickets yet, more will be available on Monday.



Reverse Advent Calendar : Thank you for all your generous donations!

The Faith Leaders would like to invite everyone to work together during Advent to gather items to donate to the local foodbank. We are going to create a '**Reverse Advent Calendar**', adding items day-by-day to the boxes. At the end of term we will be taking the donated items to the foodbank.

How you can help:

We would be grateful if you could send into school an item from the list below.

Suggested items to donate:

Long life food:

- Soup, pasta sauce, tinned veg, tinned meat or fish
- rice pudding, custard, tinned fruit, long life milk

Special Christmas Treats:

- biscuits, chocolates

Please check all donated food is within best before dates. Thank you for your support.



Due to our busy December calendar, the next Celebration Assembly will be on Thursday 18th December. High Achievers for the term can only be calculated on the 17th December so parents of the children receiving these will be notified via email on the 17th December



Mrs Grainger and Mrs Moss would like to **thank** and **congratulate** the children who have been a part of our **Choir and Singing Club** this term. Last week they sang at our Christmas Markets spreading Christmas cheer. Next week the older children will be joining the Warm Spaces Lunch at the Community Centre to perform their carols.

We will now be taking a little break during the Spring Term. (Please note: there is no choir or Singing Club next week.) Watch out for these clubs reopening later in the year.

School Lunches

If your child receives a school lunch, please can all parents **pre-order** these via the Parent Pay App. Pre-ordering ensures your child receives a lunch they will enjoy which can't be guaranteed if the ordering is only completed on the day. If you require any help with this, please contact the school office and we will be more than happy to help!

Parentpay

Parent Pay is the method we use to collect any payments in school, including school visits. Please contact the office if you have any Parent Pay issues

NEW: Sports Clubs from January 2026

Monday 5th Jan : **Girls Can' Multisports Yrs 3,4,5 & 6 girls**. For 5 weeks limited to 16 places

Tuesdays 6th Jan : **Dance Club Ys 3,4,5 & 6** with Miss Birchall and Mrs Flintoff . For 5 weeks limited to 20 places

Wed 7th Jan **Yrs 3,4,5 & 6**. For 5 weeks limited to 16 places

Toast is on Parentpay £6.00 for Jan - Feb half term

Tickets for **The Raggedy King EYFS and KS1 Performance**

Additional tickets will become available on Monday 15th on a first come, first served basis.

Year 6 : Towerwood payments

Diary Dates

We do like to provide diary dates as far in advance as possible but please keep checking as some dates may change and new dates will be added

Tuesday 16th December : EYFS & KS1 Christmas Performances of **The Raggedy King** : 10am & 6pm

Wednesday 17th December : Choir to sing at the Community centre

Thursday 18th December : KS2 Advent Service 2pm – Parents are welcome to join us!

Friday 19th December : Christmas parties

Friday 19th December : Rock Steady performance 2.30pm

Friday 19th December : school closes at 3.20pm for all pupils (4.30pm After School Club)



ONE STOP SHOP

A monthly drop in for families to access advice and support.



Primary Mental Health Team

No need to book,
Just turn up



21/01/26
18/2/26
18/3/26

3rd
Wednesday
of the month
9:30 -
11:30am

School Nurse



Pathway Navigator



West Paddock Family Hub
West Paddock
Leyland, PR25 1HR

Lancashire SEND Roadshow

2025/2026

The roadshows are for families and practitioners to find out more about support and services available for Children and Young People with Special Educational Needs and Disabilities (SEND) and their parents and carers.

These Roadshows are happening across Lancashire bringing the SEND Local Offer to your area.

The SEND Local Offer brings together all services in Lancashire for children and young people aged 0-25 with SEND, and their families.



CHRISTMAS HOLIDAY ACTIVITIES

HAF

Free, fun activities and a healthy meal for children who qualify for benefit-related free school meals. During the Christmas school holidays, the Holiday Activities and Food (HAF) programme will provide a range of free activities such as kickboxing, skateboarding, gymnastics, arts and crafts and more.

If your child is eligible, you will receive an email from Holiday Activities in the weeks leading up to the school holiday. For more information, or to check your eligibility, please see the link or QR code below.



Lancashire
County Council

Department for Education

southribble.gov.uk/haf

South Ribble
starbush council

Get advice and support

talk zone

Age 0-19 (up to 25 for young people with learning difficulties or disabilities)

Someone to talk to
Problems at home/school
Jobs and training
Apprenticeships
Staying safe online
Sex and health
Relationships

Mental Health
Self Harm
Bullying
Drugs and alcohol
Things to do
Housing, rights and money
What age can I?

Text 07786 51 11 11

Talk online lancashire.gov.uk/youthzone

Call 0800 51 11 11

facebook.com/LancashireYPS
twitter.com/LancashireYPS

You can contact us 365 days a year
2pm to 10pm

You are warmly invited to

West Paddock's Warm and Welcome



Tuesday's 15:30 - 16:30

Come along for a warm welcome from the
Children's and Family Wellbeing Service



Nurture Parenting is a 10 week course that emphasises the importance of emotional support, positive discipline, and strong parent-child relationships in a child's development.



Nurture Parenting focuses on creating a safe and loving environment where children feel valued and understood.

Key elements include: Emotional Health, Positive Discipline, Empathy and Understanding and Quality Parenting .



Please scan the QR code to book a place.



Riding the Rapids is a free 10 week course for parents/carers of children and young people with a diagnosis of Autism, a severe learning disability or those who are on the pathway.



The course aims to help parents to understand and support their child's behaviour, in the context of additional needs.



The course is delivered to parents/carers of children who are within primary education.



Please scan the QR code to book a place.

You are warmly invited to

West Paddock's

Christmas

Warm and Welcome



Come along for
mince pies, pizza,
warm drinks
& fun.

Monday 29th December
Tuesday 30th December &
Wednesday 31st December

1pm - 4pm





Weigh Stay & Play

We provide lots of exciting activities for you and baby to support your child's brain development. The group provides professional and peer support for new parents/carers. Discuss key subjects such as safer sleep, ICON, baby brain development, physical development and much more.



Check out our timetable on



Magical Moments

Magical Moments welcomes all children aged 0-5 who have Special Educational needs or Disabilities, or are awaiting assessment and would benefit from our calm and supportive space



The group offers free and structured play to help with development plus a supportive atmosphere for parents and carers. Siblings also welcome.

FREE snack provided



Check out our timetable on



BABY SENSORY

CHECK OUT OUR TIMETABLE ON



SPECIALLY SELECTED ACTIVITIES TO HELP STIMULATE AND DEVELOP YOUR BABIES SENSES AND LEARNING THROUGH PLAY.



MEET OTHER PARENTS/CARERS WITH BABIES OF A SIMILAR AGE AND YOU NEVER KNOW, YOU OR YOUR BABY MIGHT END UP MAKING LIFELONG FRIENDS!

NO NEED TO BOOK - JUST TURN UP!



HORIZONS

DO YOU SUFFER WITH LOW MOOD?

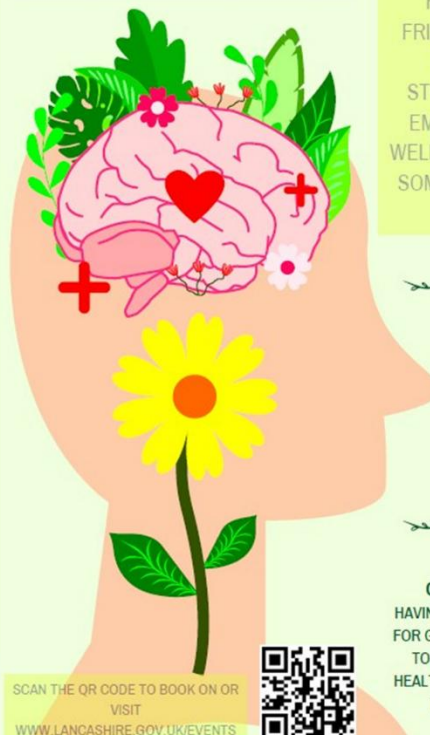
FEEL LIKE YOU NEED SOME SUPPORT?

HORIZONS IS A FREE, FRIENDLY GROUP FOR ALL PARENTS WHO ARE STRUGGLING WITH THEIR EMOTIONAL HEALTH AND WELLBEING AND WOULD LIKE SOME SUPPORT FROM OUR FRIENDLY STAFF

WE OFFER A SAFE ENVIRONMENT, USING HOLISTIC METHODS TO SHOW YOU HOW EVEN THE SIMPLEST OF THINGS CAN IMPROVE YOUR WELLBEING AND HELP YOURSELF & YOUR FAMILY TOO!

CONNECT WITH OTHERS. HAVING A SUPPORT SYSTEM IS CRUCIAL FOR GOOD MENTAL HEALTH. REACH OUT TO FRIENDS, FAMILY, OR A MENTAL HEALTH PROFESSIONAL IF YOU NEED TO TALK OR RECEIVE GUIDANCE.

SCAN THE QR CODE TO BOOK ON OR VISIT
WWW.LANCASHIRE.GOV.UK/EVENTS



YOU'RE INVITED TO JOIN

STORY CORNER



CHECK OUT OUR TIMETABLE ON



COME AND JOIN US FOR A FREE, FUN AND INTERACTIVE GROUP TO HELP YOUR TODDLER GET SCHOOL READY!



FREE SNACK INCLUDED!
SUITABLE FOR MOBILE CHILDREN - 4 YEARS



THIS GROUP INVOLVES DEVELOPING CHILDREN'S COMMUNICATION AND LANGUAGE SKILLS THROUGH READING, RHYMES AND IMAGINATIVE PLAY

THIS GROUP GIVES PARENTS THE OPPORTUNITY TO GAIN CONFIDENCE WITH HELPING YOUR CHILD'S DEVELOPMENT AND PEER SUPPORT



FREE Snack Provided

NEW GROUP ON SATURDAYS
@ WEST PADDOCK 9:30-11am
FORTNIGHTLY FROM 10/1/26

For primary aged Children with SEND



COLOURFUL FOOTSTEPS

Free group suitable for primary aged children with SEND

THIS GROUP AIMS TO PROVIDE A SPACE FOR CHILDREN WITH SEND TO DEVELOP SOCIAL AND EMOTIONAL SKILLS ALONG WITH BUILDING THEIR CONFIDENCE AND RESILIENCE. THE SESSION PROVIDES LOTS OF ENGAGING ACTIVITIES BOTH PHYSICAL AND EMOTIONAL FOR THE CHILDREN INCLUDING SOFT PLAY, GAMES AND ARTS & CRAFTS



FREE GROUP FOR MOBILE CHILDREN - 4 YEARS



MINI MOVE & GROOVE

These sessions support your child to adopt a healthy lifestyle through physical play and activities, including gross and fine motor skills, dance along songs, games and so much more!

FREE SNACK INCLUDED



CHECK OUT OUR TIMETABLE ON



BABY & YOU

No need to book - just turn up!



Check out our timetable on



Baby weigh sessions on alternate weeks

WHY PLAY WITH US?

We provide lots of exciting activities for you and baby to support your child's brain development. The group provides professional and peer support for new parents/carers. Meet and network with other new parents/carers and their babies to play and discuss key subjects such as safer sleep, ICON, baby brain development, physical development and much more.



SUITABLE FOR NEWBORN - MOBILE BABIES

Messages not to be missed!

The School car park

We are very fortunate to have a large car park which we allow parents/visitors to make use of. This can only remain the case if all car park users adhere to our safety rules. Any parents/visitors to school wishing to use the school car park **MUST park only in designated bays**. **Disability marked spaces are only to be used by holders of a blue badge**. If car park users choose not to follow these safety rules, you will be asked to move your car. Please understand, anyone asking you to move your vehicle is doing this for the safety of our school community.

Scooters (electric or otherwise) and bikes are not permitted to be ridden on the school premises. This is to safeguard all in the community, especially our younger members. Many thanks in anticipation of your support.

Contacts

Please inform the School Office of any changes to address, telephone numbers, emergency contacts etc.. as soon as possible. Thank you

School App

Please make sure you have got the latest version of the School App. If you haven't got our App then please do so as soon as possible as this is our main channel for communication. Please contact the office if you have any School App issues.

Medications

If your child suffers with asthma and has an inhaler, please bring a labelled inhaler to the school office to complete the medical forms for us to retain in school.

Uniform

Please ensure all uniform is labelled so any lost items can be returned. If anyone requires any 'good as new' uniform, we have a good stock in school of generously donated items so please speak to Lisa or ask at the office. Any further donations would be gratefully received.

PE Timetable Autumn 2

All children are to come to school in their PE kit on their allocated day.

Reception Class : Tuesday & Thursday

Year 1 : Tuesday

Year 2 : Wednesday

Year 3 : Tuesday & Wednesday

Year 4 : Thursday & Friday

Year 5 : Wednesday & Thursday

Year 6 : Thursday & Friday

Communication

Our School website information about school, our routines and our policies. Newsletter links are emailed and App messaged weekly on a Friday and are also available on the website. If you have any questions about anything, please do contact the school office. If you wish to speak with your child's class teacher, please contact the school office to make an appointment. We believe in working closely with children, parents and families and welcome your ideas and views.

Admissions for Reception 2026

If you have a child who is due to start school in Reception in September 2026 (those who have their 4th birthday between 1st September 2025 and 31st August 2026) the on-line application is now available. You must apply even if a brother or sister is already at the school. Go to www.lancashire.gov.uk/schools. It is quick and easy to do and you will receive email confirmation of your application. There is also a supplementary form for Catholic Primary schools which is available from the School Office. This should be completed and sent into school in support of the on-line application. The website closes on the : **15th January 2026 for Primary School applications.**



SEND

Peer Support Drop In

With Community Seniors/Family Hub Navigator



**Every 3rd Wednesday
of the month**

**9:30am – 11:30am
West Paddock Family
Hub
PR25 1HR**

**Peer Support drop in
for parents/carers
of children with SEND**



**Partner agencies will
join some of our drop ins, such as**

**SENDIAS, Key,
Primary Mental
Health Workers,
ASD Pathway Navigator,
Educational Psychologists,
Barnardo's, Lancashire Positive
Minds and
Lancashire Parent
Career Forum**



Break Time

Fun group activities for children and young people with SEND in Lancashire

Don't forget!

Registrations will be open from
Monday 27th October 2025
to
Sunday 18th January 2026

Both new and current
members must register!

www.lancashire.gov.uk/SEND



or scan:



lancashire.gov.uk/SEND



Lancashire
County
Council



01524 434343



WHAT'S ON... Regular Events

MONDAY	9.30-NOON	COFFEE LOUNGE
	10.00-11.30 <i>2nd Monday of month</i>	LEGO (all welcome)
	9.00-NOON	MUMS & TOTS
	1.15-3.30 EVERY 2 WEEKS	WIDOWS WELCOME
	2.00-3.00	Do Fitness
TUESDAY	9.30-NOON	COFFEE LOUNGE
	5.30-7.30	DRAMA GROUP (over 16)
	3.30-5.30 <i>1st Tuesday of Month</i>	LEGO (families)
	6.00 - 8.00 <i>1st Tuesday of Month</i>	LEGO (Adults)
WEDNESDAY	11AM-2PM	WARM SPACE <i>October - April</i>
	12 NOON <i>1st WED OF MONTH</i>	COMMUNITY LUNCH
THURSDAY	9.30-NOON	COFFEE LOUNGE
	11.15am-12.15pm	DO FITNESS
	1.00-3.00 <i>2ND THURS OF MONTH. BOOKING ESSENTIAL 07880790749</i>	MUSIC & AFTERNOON TEA
	7.00-11.00 <i>LAST THURS OF MONTH</i>	CEILIDH CLUB
FRIDAY	9.30-NOON	COFFEE LOUNGE
	10.00-12NOON	MANKIND MEN'S GROUP



**St. Mary's
Community Centre
What's On**

Date	Event	For	
Saturday 11 th October	An Audience with Shaun Wallace	Fundraising for Community Centre & SLEAP	Tickets on sale in Coffee Lounge and Online Doors open @ 7.00pm All ticket event SOLD OUT
Sunday 19 th October	Craft fair	Community & Fundraising	Range of Craft Stalls Open 11.00 – 2.00 Coffee lounge open
Friday 24 th October	Plaque Reveal & Entertainment	The whole Community	Open evening 6.30 – 9.00pm community centre Thanks to everyone who contributed to the new toilet facilities. Uncovering the plaque 7.00
Thursday 30 th October	LEGO & Lunch	Community Families	You arrive 10.30 choose your LEGO build Followed by lunch 12.30 Pizza & Chips Check posters need to book FREE
Friday 31 st October	Pumpkin Party	Community Families	Family Pumpkin Party Any fancy dress – carved pumpkin competition (LED candle only) Hot dogs and snacks for children.
Friday 21 st November	Quiz Night	Community	Doors open 7 for 7.30 start. Teams of up to 5 £1 per head
Friday 12 th December	Bingo	Community and Family	Bingo tickets 50p per book Doors open 6.00 for 6.30 start Hot dogs and snacks for children.
Sunday December 14 th	Children's Christmas Shop	Community Families	Specially selected gifts for children to purchase for parents, grandparents and family Open 11.00 am – 2.00pm
Monday December 22nd	Christmas Film	Community Families	Family Christmas Film Night – early visit from Santa Doors open 6.00 for 6.30 start Hot dogs and snacks for children.