

St. Anne's Catholic Primary School



Headteacher: Mrs E Darnell

Tel: 01772 422769 E-mail: head@st-annes.lancs.sch.uk

19/12/2025

A week of proud moments!

We were so proud of all of our EYFS, Y1 & Y2 pupils who presented the show 'The Raggedy King' on Tuesday. They sang beautifully and acted so confidently in front of such a huge crowd of friends and family – we were all so proud of them! Many thanks to all the staff who have worked tirelessly to support the children in this performance and thank you to all the family members who have practiced lines and sang songs with them as well as making a great audience at the performances!

Thank you to all who came to enjoy our KS2 Advent Service yesterday the children sang beautifully and it was a fitting end to our Advent celebrations!

Reflection for the week

Christmas Blessing

*May God's radiant
light guide your way,
May the joy of the
angels fill your heart,
May the love of Jesus
surround you,
And may His peace
stay with you always.
Amen.*



Shining Star Awards for Exceptional Behaviour throughout the Autumn Second-half term

- Year 6 : Hermione Melling
- Year 5 : Sophie Holden
- Year 4 : Tillie Stopford-Collins
- Year 3 : Skye Johnson
- Year 2 : Jude Whitfield
- Year 1 : Noah Garside
- Reception : William Minorczyk



[Well done to all of you!!](#)

Congratulations to Delilah in Y6 who won the Mayor's Christmas Card Competition! The Mayor of South Ribble, Cllr Paul Wharton -Hardman BEM presented Delilah with her prize. He told us that the card had been sent o His Majesty King Charles. Well done, Delilah!



KS2 Advent Service



Community Choir

The KS2 members of our choir went to the Community Centre on Wednesday to sing at the Community |Centre's Christmas Party. The children sang beautifully and were highly praised by the audience. Huge thanks to Mrs Grainger and Mrs Moss who lead the choirs and make events like these happen!



Carol Singing at the Community Centre
December 2025





We ended the term with a fantastic Rock Steady performance from our four school bands! Well done everyone!

High Achievers of the term!

Class	St Anne's	St Anselm's	St Edmund's	St Benedict's
Rec	Toby Baldwin & Michael Kerwin	Maya Modasia	Orla Derry	Iona Davidson
1	Isabelle Cleece	Poppy Coulter	Franklin Dale	Noah Garside
2	Lucy Keegan	Bladen l'Anson	Esme Merella	Eden Ofodeme
3	Effie Corcoran	Hannah Russell	Zuzanna Barczynska	Clayton Worswick
4	Harry Baldwin	Jaymin Modasia	Damon Sinclair	Nina Ofodeme
5	Max Salisbury	Matilda Valentine	Edie Truesdale	Andrea Diaz Blanco
6	Jack Cleece	Sarai Russell	Martha Craig	Amelie Kitchener

Head Boy & Girl

Thank you to Jimmy and Heidi in Year 6 for their commitment to their role as Head Boy and Head Girl this term. They have represented us brilliantly during the festive performances and weekly Assemblies. They are handing their titles over to Santiago and Sarai from January.

Uniform

A reminder all children are expected to wear **full uniform** to school. This includes school shoes, not trainers.

We do ask that **hair styles** are simple with gelled up hair, coloured hair or braids, closely shaved and shaved patterns are saved for the school holidays and are not permitted to be worn in school.

The only **jewellery** that should be worn to school is a watch. Earrings, necklaces, rings and bracelets are not permitted for health and safety reasons. **Nail varnish** and **tattoos** are not to be worn.

Raffle

Thank you to all who supported this raffle. The prizes were drawn at Assembly yesterday. Congratulations to all our winners!

Prizes	
Hamper	Arthur Bentham
£60.00 voucher for Turbary House Leisure Park in Whitestake	Isabelle Cleece
Liverpool Football shirt	Alfie Collinswood
£25.00 voucher from Duxbury's DIY store	Miss Bailey
Voucher for a child's hair cut From Seven Stars Barber	Lilah Allen
£20.00 voucher from Voie hairdressers	Franklin Dale
Voucher for 2 adults and 2 children for Smithhills Open Farm	Emily Salisbury
£20.00 voucher for Rebel in Chorley(bowling)	Toby Baldwin
Absolute Vanilla Vodka	Arthur Bentham
Thornton chocolates	Eleanor Braithwaite Mayor
Milk Tray chocolates	Theo Kelly
Heroes Box	Theo Kelly
Nutcracker Fudge tin	Kobi Cotterill
Victoria Biscuits	Esme Merella

I am so privileged to work with such an amazing group of people who are so caring and committed to their roles, and to each and every one of your children. We all enjoyed a great Christmas do last Friday, spending time as an almost full team (there's always a late one... Mr Lightfoot!!). They really are the best team of people who bring brightness to every day!

On behalf of all the staff I would like to thank you for all your cards, gifts and good wishes, they are very much appreciated.

We wish you all a very happy Christmas and look forward to welcoming the children back in the New Year. Merry Christmas everyone!!

Mrs Darnell



On Parentpay :

Parentpay

Parent Pay is the method we use to collect any payments in school, including school visits. Please contact the office if you have any Parent Pay issues

Sports Clubs from January 2026

Monday 5th Jan : 'Girls Can' Multisports Yrs 3,4,5 & 6 girls. For 5 weeks limited to 16 places

Tuesday 6th Jan : Dance Club Ys 3,4,5 & 6 with Miss Birchall and Mrs Flintoff . For 5 weeks limited to 20 places (FULL)

Wednesday 7th Jan **Yrs 3,4,5 & 6.** For 5 weeks limited to 16 places (FULL)

Toast is on Parentpay £6.00 for Jan - Feb half term

Year 6 : Towerwood payments

Christmas Masses at St. Mary's Leyland



Wednesday, 24th December:

Christmas Eve Mass - 18.00

Christmas Eve Mass - 21.00

Thursday, 25th December:

Christmas Day Mass - 10.00



Reverse Advent Calendar

**Thank you for all your generous
donations!**

The Faith Leaders would like to thank all you who donated over the last few weeks. All the donations have been taken to the foodbank today.

Thank you so much!

Diary Dates

We do like to provide diary dates as far in advance as possible but please keep checking as some dates may change and new dates will be added

In the New Year :

Monday 5th January : School opens for the New Year

Friday 9th January : Celebration Assembly : All parents are welcome to join us.

Friday 16th January : Celebration Assembly : All parents are welcome to join us.

Monday 19th – Friday 23rd January : Mission Launch Week

Friday 23rd January : Celebration Assembly : All parents are welcome to join us.

Friday 30th January : Celebration Assembly : All parents are welcome to join us.

Friday 6th February : Y6 Class Assembly

Friday 6th February : Reception Class Welcome afternoon for Parents.



ONE STOP SHOP

A monthly drop in for families to access advice and support.



Primary Mental Health Team

No need to book,
Just turn up



21/01/26
18/2/26
18/3/26

3rd
Wednesday
of the month
9:30 -
11:30am

School Nurse



Pathway Navigator



Advice about
School Age Autism
pathway processes



West Paddock Family Hub
West Paddock
Leyland, PR25 1HR

Lancashire SEND Roadshow

2025/2026

The roadshows are for families and practitioners to find out more about support and services available for Children and Young People with Special Educational Needs and Disabilities (SEND) and their parents and carers.

These Roadshows are happening across Lancashire bringing the SEND Local Offer to your area.

The SEND Local Offer brings together all services in Lancashire for children and young people aged 0-25 with SEND, and their families.



Get advice and support



Age 0-19 (up to 25 for young people with learning difficulties or disabilities)

Someone to talk to

Problems at home/school
Jobs and training
Apprenticeships
Staying safe online
Sex and health
Relationships

Mental Health

Self Harm
Bullying
Drugs and alcohol
Things to do
Housing, rights and money
What age can I?

Text 07786 511111

Talk online lancashire.gov.uk/youthzone

Call 0800 511111

facebook.com/LancashireYPS

twitter.com/LancashireYPS

You can contact us 365 days a year

2pm to 10pm

CHRISTMAS HOLIDAY ACTIVITIES

HAF

Free, fun activities and a healthy meal for children who qualify for benefit-related free school meals. During the Christmas school holidays, the Holiday Activities and Food (HAF) programme will provide a range of free activities such as kickboxing, skateboarding, gymnastics, arts and crafts and more.

If your child is eligible, you will receive an email from Holiday Activities in the weeks leading up to the school holiday. For more information, or to check your eligibility, please see the link or QR code below.



Lancashire
County
Council



Department for Education

southribble.gov.uk/haf

**South
Ribble**
Borough Council

You are warmly invited to

West Paddock's Warm and Welcome



Tuesday's 15:30 - 16:30

Come along for a warm welcome from the
Children's and Family Wellbeing Service



Nurture Parenting is a 10 week course that emphasises the importance of emotional support, positive discipline, and strong parent-child relationships in a child's development.



Nurture Parenting focuses on creating a safe and loving environment where children feel valued and understood.

Key elements include: Emotional Health, Positive Discipline, Empathy and Understanding and Quality Parenting .



Please scan the QR code to book a place.



Riding the Rapids is a free 10 week course for parents/carers of children and young people with a diagnosis of Autism, a severe learning disability or those who are on the pathway.



The course aims to help parents to understand and support their child's behaviour, in the context of additional needs.



The course is delivered to parents/carers of children who are within primary education.



Please scan the QR code to book a place.

You are warmly invited to

West Paddock's

Christmas

Warm and Welcome



Come along for
mince pies, pizza,
warm drinks
& fun.

Monday 29th December
Tuesday 30th December &
Wednesday 31st December

1pm - 4pm





Weigh Stay & Play

We provide lots of exciting activities for you and baby to support your child's brain development. The group provides professional and peer support for new parents/carers. Discuss key subjects such as safer sleep, ICON, baby brain development, physical development and much more.



Check out our timetable on



Magical Moments

Magical Moments welcomes all children aged 0-5 who have Special Educational needs or Disabilities, or are awaiting assessment and would benefit from our calm and supportive space



The group offers free and structured play to help with development plus a supportive atmosphere for parents and carers. Siblings also welcome.

FREE snack provided



Check out our timetable on



BABY SENSORY

CHECK OUT OUR TIMETABLE ON



SPECIALLY SELECTED ACTIVITIES TO HELP STIMULATE AND DEVELOP YOUR BABIES SENSES AND LEARNING THROUGH PLAY.



MEET OTHER PARENTS/CARERS WITH BABIES OF A SIMILAR AGE AND YOU NEVER KNOW, YOU OR YOUR BABY MIGHT END UP MAKING LIFELONG FRIENDS!

NO NEED TO BOOK - JUST TURN UP!



HORIZONS

DO YOU SUFFER WITH LOW MOOD?

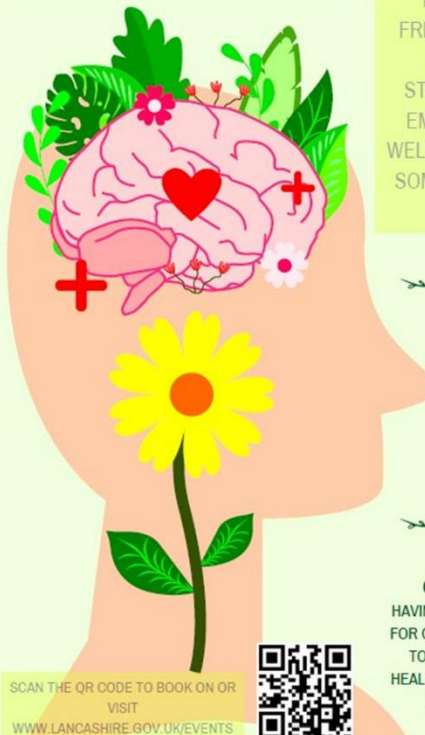
FEEL LIKE YOU NEED SOME SUPPORT?

HORIZONS IS A FREE, FRIENDLY GROUP FOR ALL PARENTS WHO ARE STRUGGLING WITH THEIR EMOTIONAL HEALTH AND WELLBEING AND WOULD LIKE SOME SUPPORT FROM OUR FRIENDLY STAFF

WE OFFER A SAFE ENVIRONMENT, USING HOLISTIC METHODS TO SHOW YOU HOW EVEN THE SIMPLEST OF THINGS CAN IMPROVE YOUR WELLBEING AND HELP YOURSELF & YOUR FAMILY TOO!

CONNECT WITH OTHERS. HAVING A SUPPORT SYSTEM IS CRUCIAL FOR GOOD MENTAL HEALTH. REACH OUT TO FRIENDS, FAMILY, OR A MENTAL HEALTH PROFESSIONAL IF YOU NEED TO TALK OR RECEIVE GUIDANCE.

SCAN THE QR CODE TO BOOK ON OR VISIT
WWW.LANCASHIRE.GOV.UK/EVENTS



YOU'RE INVITED TO JOIN

STORY CORNER



CHECK OUT OUR TIMETABLE ON



COME AND JOIN US FOR A FREE, FUN AND INTERACTIVE GROUP TO HELP YOUR TODDLER GET SCHOOL READY!



FREE SNACK INCLUDED!
SUITABLE FOR MOBILE CHILDREN - 4 YEARS



THIS GROUP INVOLVES DEVELOPING CHILDREN'S COMMUNICATION AND LANGUAGE SKILLS THROUGH READING, RHYMES AND IMAGINATIVE PLAY

THIS GROUP GIVES PARENTS THE OPPORTUNITY TO GAIN CONFIDENCE WITH HELPING YOUR CHILD'S DEVELOPMENT AND PEER SUPPORT



NEW GROUP ON SATURDAYS
@ WEST PADDOCK 9:30-11am
FORTNIGHTLY FROM 10/1/26

FREE Snack
Provided

For primary
aged Children
with SEND



COLOURFUL FOOTSTEPS

Free group suitable for primary aged children with SEND

THIS GROUP AIMS TO PROVIDE A SPACE FOR CHILDREN WITH SEND TO DEVELOP SOCIAL AND EMOTIONAL SKILLS ALONG WITH BUILDING THEIR CONFIDENCE AND RESILIENCE. THE SESSION PROVIDES LOTS OF ENGAGING ACTIVITIES BOTH PHYSICAL AND EMOTIONAL FOR THE CHILDREN INCLUDING SOFT PLAY, GAMES AND ARTS & CRAFTS



FREE GROUP FOR MOBILE CHILDREN - 4 YEARS

MINI MOVE & GROOVE

These sessions support your child to adopt a healthy lifestyle through physical play and activities, including gross and fine motor skills, dance along songs, games and so much more

FREE SNACK INCLUDED



CHECK OUT OUR TIMETABLE ON



BABY & YOU

No need to book - just turn up!



Check out our timetable on



Baby weigh sessions on alternate weeks

WHY PLAY WITH US?

We provide lots of exciting activities for you and baby to support your child's brain development. The group provides professional and peer support for new parents/carers. Meet and network with other new parents/carers and their babies to play and discuss key subjects such as safer sleep, ICON, baby brain development, physical development and much more.



SUITABLE FOR NEWBORN - MOBILE BABIES

Messages not to be missed!

The School car park

We are very fortunate to have a large car park which we allow parents/visitors to make use of. This can only remain the case if all car park users adhere to our safety rules. Any parents/visitors to school wishing to use the school car park **MUST park only in designated bays. Disability marked spaces are only to be used by holders of a blue badge.** If car park users choose not to follow these safety rules, you will be asked to move your car. Please understand, anyone asking you to move your vehicle is doing this for the safety of our school community.

Scooters (electric or otherwise) and bikes are not permitted to be ridden on the school premises. This is to safeguard all in the community, especially our younger members. Many thanks in anticipation of your support.

Contacts

Please inform the School Office of any changes to address, telephone numbers, emergency contacts etc.. as soon as possible. Thank you

School App

Please make sure you have got the latest version of the School App. If you haven't got our App then please do so as soon as possible as this is our main channel for communication. Please contact the office if you have any School App issues.

Medications

If your child suffers with asthma and has an inhaler, please bring a labelled inhaler to the school office to complete the medical forms for us to retain in school.

Uniform

Please ensure all uniform is labelled so any lost items can be returned. If anyone requires any 'good as new' uniform, we have a good stock in school of generously donated items so please speak to Lisa or ask at the office. Any further donations would be gratefully received.

PE Timetable Autumn 2

All children are to come to school in their PE kit on their allocated day.

Reception Class : Tuesday & Thursday

Year 1 : Tuesday

Year 2 : Wednesday

Year 3 : Tuesday & Wednesday

Year 4 : Thursday & Friday

Year 5 : Wednesday & Thursday

Year 6 : Thursday & Friday

Communication

Our School website information about school, our routines and our policies. Newsletter links are emailed and App messaged weekly on a Friday and are also available on the website. If you have any questions about anything, please do contact the school office. If you wish to speak with your child's class teacher, please contact the school office to make an appointment. We believe in working closely with children, parents and families and welcome your ideas and views.

Admissions for Reception 2026

If you have a child who is due to start school in Reception in September 2026 (those who have their 4th birthday between 1st September 2025 and 31st August 2026) the on-line application is now available. You must apply even if a brother or sister is already at the school. Go to www.lancashire.gov.uk/schools. It is quick and easy to do and you will receive email confirmation of your application. There is also a supplementary form for Catholic Primary schools which is available from the School Office. This should be completed and sent into school in support of the on-line application. The website closes on the : **15th January 2026 for Primary School applications.**



SEND

Peer Support Drop In

With Community Seniors/Family Hub Navigator



**Every 3rd Wednesday
of the month**

**9:30am – 11:30am
West Paddock Family
Hub
PR25 1HR**

**Peer Support drop in
for parents/carers
of children with SEND**



**Partner agencies will
join some of our drop ins, such as**

**SENDIAS, Key,
Primary Mental
Health Workers,
ASD Pathway Navigator,
Educational Psychologists,
Barnardo's, Lancashire Positive
Minds and
Lancashire Parent
Career Forum**



Break Time

Fun group activities for children and young people with SEND in Lancashire

Don't forget!

Registrations will be open from
Monday 27th October 2025
to
Sunday 18th January 2026

Both new and current
members must register!

www.lancashire.gov.uk/SEND



or scan:



lancashire.gov.uk/SEND

Lancashire
County
Council



01524 434343



WHAT'S ON... Regular Events

MONDAY	9.30-NOON	COFFEE LOUNGE
	10.00-11.30 <i>2nd Monday of month</i>	LEGO (all welcome)
	9.00-NOON	MUMS & TOTS
	1.15-3.30 EVERY 2 WEEKS	WIDOWS WELCOME
	2.00-3.00	Do Fitness
TUESDAY	9.30-NOON	COFFEE LOUNGE
	5.30-7.30	DRAMA GROUP (over 16)
	3.30-5.30 <i>1st Tuesday of Month</i>	LEGO (families)
	6.00 - 8.00 <i>1st Tuesday of Month</i>	LEGO (Adults)
WEDNESDAY	11AM-2PM	WARM SPACE <i>October - April</i>
	12 NOON <i>1st WED OF MONTH</i>	COMMUNITY LUNCH
THURSDAY	9.30-NOON	COFFEE LOUNGE
	11.15am-12.15pm	DO FITNESS
	1.00-3.00 <i>2ND THURS OF MONTH. BOOKING ESSENTIAL 07880790749</i>	MUSIC & AFTERNOON TEA
	7.00-11.00 <i>LAST THURS OF MONTH</i>	CEILIDH CLUB
FRIDAY	9.30-NOON	COFFEE LOUNGE
	10.00-12NOON	MANKIND MEN'S GROUP



**St. Mary's
Community Centre
What's On**

Date	Event	For	
Saturday 11 th October	An Audience with Shaun Wallace	Fundraising for Community Centre & SLEAP	Tickets on sale in Coffee Lounge and Online Doors open @ 7.00pm All ticket event SOLD OUT
Sunday 19 th October	Craft fair	Community & Fundraising	Range of Craft Stalls Open 11.00 – 2.00 Coffee lounge open
Friday 24 th October	Plaque Reveal & Entertainment	The whole Community	Open evening 6.30 – 9.00pm community centre Thanks to everyone who contributed to the new toilet facilities. Uncovering the plaque 7.00
Thursday 30 th October	LEGO & Lunch	Community Families	You arrive 10.30 choose your LEGO build Followed by lunch 12.30 Pizza & Chips Check posters need to book FREE
Friday 31 st October	Pumpkin Party	Community Families	Family Pumpkin Party Any fancy dress – carved pumpkin competition (LED candle only) Hot dogs and snacks for children.
Friday 21 st November	Quiz Night	Community	Doors open 7 for 7.30 start. Teams of up to 5 £1 per head
Friday 12 th December	Bingo	Community and Family	Bingo tickets 50p per book Doors open 6.00 for 6.30 start Hot dogs and snacks for children.
Sunday December 14 th	Children's Christmas Shop	Community Families	Specially selected gifts for children to purchase for parents, grandparents and family Open 11.00 am – 2.00pm
Monday December 22nd	Christmas Film	Community Families	Family Christmas Film Night – early visit from Santa Doors open 6.00 for 6.30 start Hot dogs and snacks for children.