



It has been a great week this week with the launch of our new Mission Statement :



Every class participated in our Kind Hearts day on Monday where every child painted a stone with bright colours and a word to 'live by'. These make a beautiful kindness carpet around our entrance hall tree.

On Tuesday, every class used a 'Big Dreams, Little People' book to learn about a significant person who had used their Bright Mind for great things.

This work culminated in a variety of outcomes On Thursday, our One Family day began with our Mission Mass led by Fr Joe. Every child then worked on a wooden decoration for our Family Tree.

Reflection for the week

LOVE with all your heart,
with all your soul,
THE LORD YOUR GOD with all your mind,
and love your neighbour as yourself.
MAT. 22:37-39

Look out for our new [Instagram page](#) where we will be sharing snippets of our school family life! Coming to you on Monday 26th January!

[Give us a follow !](#)

[stannesprimary_leyland](#)

Uniform

Following the detailed article over the last couple of weeks, **THANK YOU** for working with us to ensure your child is wearing full uniform. I have spoken with the children and we are now adding leggings to the PE kit as an alternative to jogging bottoms.





High Achievers!

Class	St Anne's	St Anselm's	St Edmund's	St Benedict's
Rec	Michael Kerwin	Octavia Ross	Orla Derry	Enid Bentham
1	Isabelle Cleece	Poppy Coulter	Marcus Duong	Noah Garside
2	Lucy Keegan	Connor Helm	Imogen Fothersgill	Tommy Swindells
3	Theo Kelly	Hannah Russell	Delilah Price	George Roy
4	Rosie Eastham & Esmail Hamilton	Jaymin Modasia	Filip Zywicki	Isabella Webb
5	Max Salisbury	Matilda Valentine	Ivy Jenkinson & Sophie Holden	Millie McIntosh
6	Jimmy Taylor	Braxton l'Anson & Sarai Russell	Martha Craig	Arthur Bentham

On Parentpay :

Parentpay

Parent Pay is the method we use to collect any payments in school, including school visits. Please contact the office if you have any Parent Pay issues

Sports Clubs January 2026

Monday 5th Jan : 'Girls Can' Multisports Yrs 3,4,5 & 6 girls. For 5 weeks limited to 16 places

Tuesday 6th Jan : Dance Club Ys 3,4,5 & 6 with Miss Birchall and Mrs Flintoff . For 5 weeks limited to 20 places (FULL)

Wednesday 7th Jan **Yrs 3,4,5 & 6.** For 5 weeks limited to 16 places (FULL)

Toast is on Parentpay £6.00 for Jan - Feb half term

Year 6 : Towerwood payments



PARENTS

Come and relax

Meet with our
NHS
Primary Mental Health
worker

TALK ABOUT
sleep, mental health &
wellbeing of children, ADHD &
ASD, anxiety & behaviour
management

Meet with a
Social Prescriber

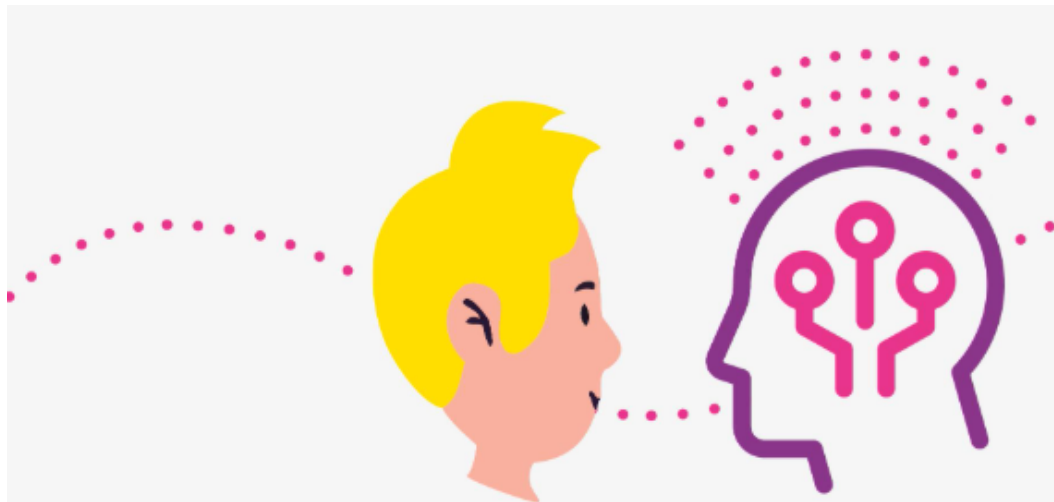
TALK ABOUT
money worries
housing issues
isolation, loneliness
employment, new skills
diet, exercise
mental health and wellbeing

10th Feb
9-11am
in Anne's Ark



The Children's Commissioner has published a **Guide for parents on managing children's digital lives**. For parents, the challenge is balancing protection from online harm with access to digital spaces essential for learning and play. Each week, I will publish on here a couple of pages from the guide. If you wish to access the guide in full, please see :

<https://www.childrenscommissioner.gov.uk/resource/what-i-wish-my-parents-or-carers-knew-a-guide-for-parents-and-carers-on-managing-childrens-digital-lives/>



ARTIFICIAL INTELLIGENCE (AI)

AI has been embedded into almost every online platform in recent years.

Simply searching for something online now brings up an AI explanation, and chatbots are now features of social media platforms. This means that interacting with AI is inevitable, and it is important that you understand what AI is, how it works and how to manage the risks around it.

Children shared how they would describe AI to their parents and carers and how they and their friends use AI in their everyday lives:

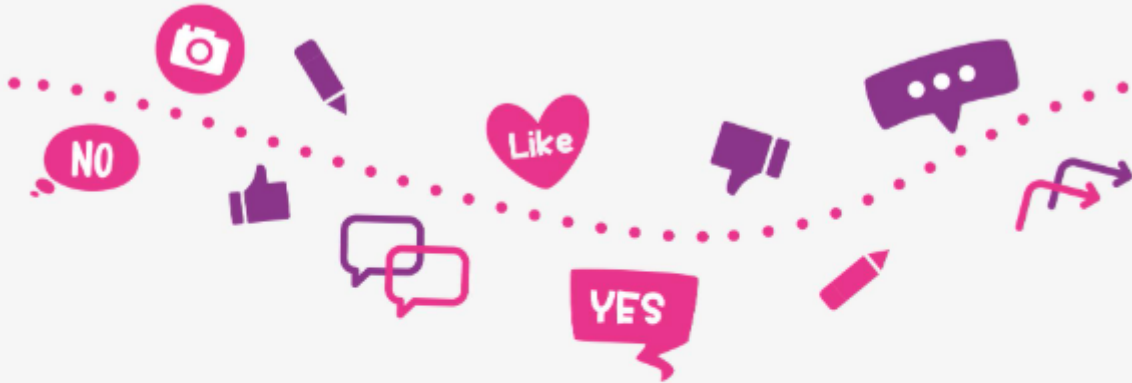
How do children describe AI?

"Intelligence created by humans to make their lives a little bit simpler and it's applicable to many different fields, like education and healthcare."

"It's a place for information when you can't be bothered to find the information."



ARTIFICIAL INTELLIGENCE (AI)



How do children use AI?

“Because they’re students, they use it for things like researching ideas with ChatGPT. You can also use it to write essays and so on. Unfortunately, it’s also used for more negative things, like deepfakes and other harmful content.”

“It would help a lot if parents made sure their children are using it in helpful ways, because it makes everything so much more efficient.”

“I think it takes away the whole purpose of having to look properly for something [...] because when I search something with AI and it tells me in two seconds, I kind of lose interest.”

“I think we focus a lot on the negatives of ChatGPT in society. But if it’s used properly—especially in education—it can really complement children’s learning. We just need to find a balance so we don’t rely on it too much.”

What you need to know about AI

It is important to check in with your child about their experiences of AI tools and AI generated content. As AI is embedded in everything from healthcare to classrooms, interaction with it is inevitable.



BE AWARE

You or your child may not always know when content (including text, images and videos) has been generated by AI. It is more important than ever to have conversations with your child about fact checking and thinking critically about what they see online.



ARTIFICIAL INTELLIGENCE (AI)

What children think

- **They feel that AI is now a normal, almost inevitable, part of life.**
Most children use AI tools for fun and often find the content funny. Others dislike AI's impact on their schoolwork or personal lives but feel unable to avoid it. They've noticed AI is now embedded in many parts of life, including homework and information searching.
- **They mostly seem relaxed about AI tools, but there were some notable exceptions.**
One child called Sora "dangerous", and others shared the view that the common use of AI tools to complete homework is unfair, because they feel AI generated content is valued more by teachers than work they do themselves.
- **For some children, ChatGPT might have overtaken Google as their main method of searching for information.**
Additionally, they are able to name numerous other AI tools that they use, including OpenAI's Sora, Google's Gemini and Meta's Llama. However, they are not able to explain how these tools work.
- **They are critical of the content they see online, knowing and understanding that some of it is likely to be AI-generated.**
Some mentioned that platforms often provided helpful labels which mark content as AI-generated, and others said that some AI image-generated images have a watermark of the AI company name on it. Children appreciate these transparency tools and find them informative. Many said they feel able to spot an AI image when they see one.
- **They feel that you can be tricked by AI tools.**
Even though many children felt able to spot an AI image themselves, some felt the same could not be said for their parents or carers. Children feel that they know more about AI than you do, and some children feel actively concerned that their parents or carers are "gullible" and at high risk of being tricked by AI tools.





ARTIFICIAL INTELLIGENCE (AI)

"It's annoying because I think it takes away people's creativity—their ability to think for themselves—and it can overshadow those who genuinely want to try or have a passion for writing."

"Because [my dad] has this group chat with all his football mates, and they do silly stuff—like he has one friend he teases a lot. So he creates fake images with AI, even AI images of his friend."

"I want to get rid of those AI overviews on Google. I really want to, I don't know how."

"Some people are so gullible they believe anything"

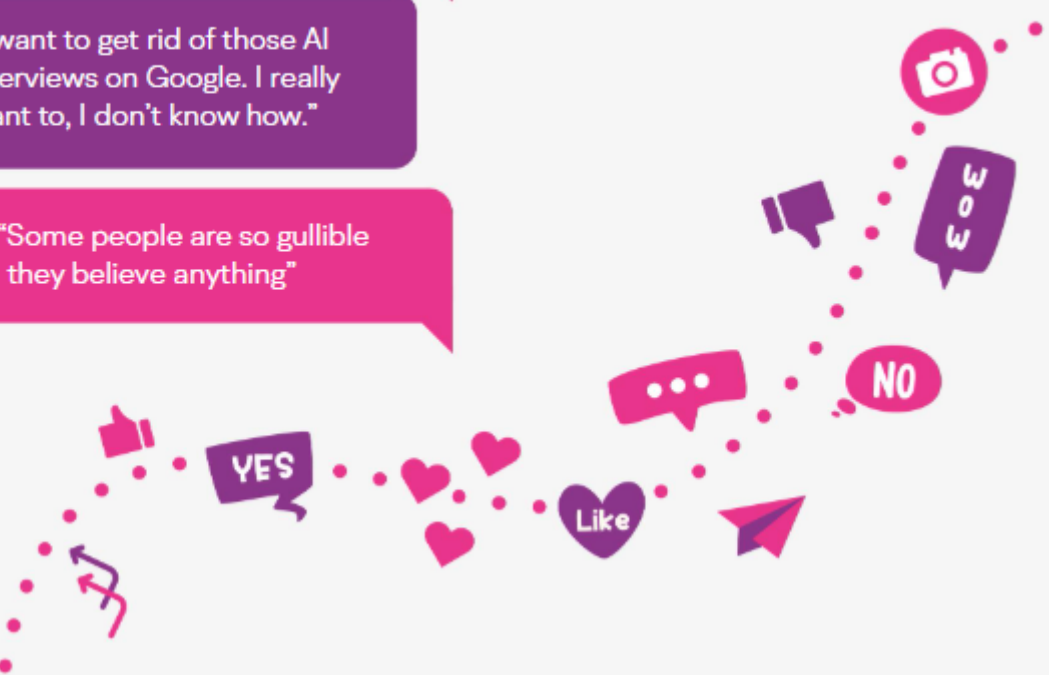
Tips for managing children's AI use

1 Be curious about what AI tools your child is using, and how.

Try and ask them to explain what the tool does and show you an example of it in use. You will learn more about the role AI has in your child's life if you let them lead the way.

2 Model being sceptical about AI generated content.

Ask your child if they think the information a chatbot gives them is real. You might want to ask ChatGPT or another AI tool a question, and show your child the answer and ask them what they think. Ask your child: "what does AI think, and what do you think?"





Diary Dates

We do like to provide diary dates as far in advance as possible but please keep checking as some dates may change and new dates will be added

In the New Year :

Friday 16th January : Whole School Inclusion Sports Festival : All children to wear PE kits to school

Monday 19th – Friday 23rd January : Mission Launch Week

Thursday 22nd January : 9.15am Family Mass in School : All parents are invited to join us

Friday 23rd January : Celebration Assembly : All parents are welcome to join us.

Friday 30th January : Celebration Assembly : All parents are welcome to join us.

Monday 2nd February : Year 3 visit to Manchester Museum

Friday 6th February : Y6 Class Assembly

Friday 6th February : Reception Class Welcome afternoon for Parents.

Thursday 12th February : Year 1 & 2 visit to Imagine That! Liverpool

Friday 13th February : Runshaw College Performances for the whole school

Friday 13th February : School closes at 3.20pm (6pm ASC) for the half-term holiday

Monday 23rd February : School reopens at 8.45am (7.45am Breakfast Club)

Thursday 5th March : Bikeability Year 5

Thursday 12th March : Bikeability Year 5

Wednesday 18th March : Year 5 visit to Catalyst Science Discovery Centre

Thursday 19th March : Year 5 Lancashire Sings Workshop

Thursday 19th March : Easter Bingo

Monday 23rd March : Year 3 & 4 Production of Joseph and his Amazing Technicolour Dreamcoat 10am & 6pm

Friday 27th March : Whole School Talent Show

Friday 27th March : Rock Steady Concert 2.30pm

Friday 27th March : School closes for Easter 3.20pm (4.30pm ASC)

Messages not to be missed!

The School car park

We are very fortunate to have a large car park which we allow parents/visitors to make use of. This can only remain the case if all car park users adhere to our safety rules. Any parents/visitors to school wishing to use the school car park **MUST park only in designated bays. Disability marked spaces are only to be used by holders of a blue badge.** If car park users choose not to follow these safety rules, you will be asked to move your car. Please understand, anyone asking you to move your vehicle is doing this for the safety of our school community.

Scooters (electric or otherwise) and bikes are not permitted to be ridden on the school premises.

This is to safeguard all in the community, especially our younger members. Many thanks in anticipation of your support.



Contacts

Please inform the School Office of any changes to address, telephone numbers, emergency contacts etc.. as soon as possible.
Thank you

Uniform

Please ensure all uniform is labelled so any lost items can be returned. If anyone requires any 'good as new' uniform, we have a good stock in school of generously donated items so please speak to Lisa or ask at the office. Any further donations would be gratefully received.

Communication

Our School website information about school, our routines and our policies. Newsletter links are emailed and App messaged weekly on a Friday and are also available on the website. If you have any questions about anything, please do contact the school office. If you wish to speak with your child's class teacher, please contact the school office to make an appointment. We believe in working closely with children, parents and families and welcome your ideas and views.

Medications

If your child suffers with asthma and has an inhaler, please bring a labelled inhaler to the school office to complete the medical forms for us to retain in school.

Lancashire County Council **FAMILY HUBS NETWORK**

You are warmly invited to
**West Paddock's
Warm and Welcome**

Tuesday's 15:30 - 16:30

Come along for a warm welcome from the
Children's and Family Wellbeing Service

Lancashire County Council **FAMILY HUBS NETWORK** **THE CENTRE FOR EMOTIONAL HEALTH**

Nurture Parenting is a 10 week course that emphasises the importance of emotional support, positive discipline, and strong parent-child relationships in a child's development.

Nurture Parenting focuses on creating a safe and loving environment where children feel valued and understood.

Key elements include: Emotional Health, Positive Discipline, Empathy and Understanding and Quality Parenting .

Please scan the QR code to book a place.



ST ANNE'S

CATHOLIC PRIMARY SCHOOL



23/01/2026



Riding the Rapids is a free 10 week course for parents/carers of children and young people with a diagnosis of Autism, a severe learning disability or those who are on the pathway.



The course aims to help parents to understand and support their child's behaviour, in the context of additional needs.



The course is delivered to parents/carers of children who are within primary education.



Please scan the QR code to book a place.



ONE STOP SHOP

A monthly drop in for families to access advice and support.



Primary Mental Health Team

No need to book,
Just turn up



21/01/26
18/2/26
18/3/26

3rd
Wednesday
of the month
9:30 -
11:30am

School Nurse



we are
withyou



Pathway Navigator



Advice about
School Age Autism
pathway processes



West Paddock Family Hub
West Paddock
Leyland, PR25 1HR



Weigh Stay & Play

We provide lots of exciting activities for you and baby to support your child's brain development. The group provides professional and peer support for new parents/carers. Discuss key subjects such as safer sleep, ICON, baby brain development, physical development and much more.



Check out
our timetable
on



Magical Moments

Magical Moments welcomes all children aged 0-5 who have Special Educational needs or Disabilities, or are awaiting assessment and would benefit from our calm and supportive space



The group offers free and structured play to help with development plus a supportive atmosphere for parents and carers. Siblings also welcome.

FREE snack
provided



Check out out
timetable on





ST ANNE'S

CATHOLIC PRIMARY SCHOOL



23/01/2026

BABY SENSORY



CHECK OUT OUR TIMETABLE ON



SPECIALLY SELECTED ACTIVITIES TO HELP STIMULATE AND DEVELOP YOUR BABIES SENSES AND LEARNING THROUGH PLAY.



MEET OTHER PARENTS/CARERS WITH BABIES OF A SIMILAR AGE AND YOU NEVER KNOW, YOU OR YOUR BABY MIGHT END UP MAKING LIFELONG FRIENDS!



NO NEED TO BOOK - JUST TURN UP!

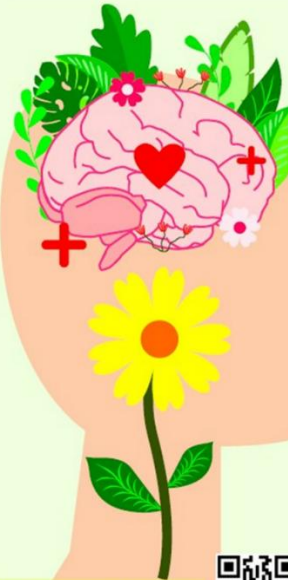


HORIZONS

DO YOU SUFFER WITH LOW MOOD?

FEEL LIKE YOU NEED SOME SUPPORT?

HORIZONS IS A FREE, FRIENDLY GROUP FOR ALL PARENTS WHO ARE STRUGGLING WITH THEIR EMOTIONAL HEALTH AND WELLBEING AND WOULD LIKE SOME SUPPORT FROM OUR FRIENDLY STAFF



WE OFFER A SAFE ENVIRONMENT, USING HOLISTIC METHODS TO SHOW YOU HOW EVEN THE SIMPLEST OF THINGS CAN IMPROVE YOUR WELLBEING AND HELP YOURSELF & YOUR FAMILY TOO!

CONNECT WITH OTHERS. HAVING A SUPPORT SYSTEM IS CRUCIAL FOR GOOD MENTAL HEALTH. REACH OUT TO FRIENDS, FAMILY, OR A MENTAL HEALTH PROFESSIONAL IF YOU NEED TO TALK OR RECEIVE GUIDANCE.

SCAN THE QR CODE TO BOOK ON OR VISIT



WWW.LANCASHIRE.GOV.UK/EVENTS



YOU'RE INVITED TO JOIN

STORY CORNER



CHECK OUT OUR TIMETABLE ON



COME AND JOIN US FOR A FREE, FUN AND INTERACTIVE GROUP TO HELP YOUR TODDLER GET SCHOOL READY!



FREE SNACK INCLUDED! SUITABLE FOR MOBILE CHILDREN - 4 YEARS



THIS GROUP INVOLVES DEVELOPING CHILDREN'S COMMUNICATION AND LANGUAGE SKILLS THROUGH READING, RHYMES AND IMAGINATIVE PLAY

THIS GROUP GIVES PARENTS THE OPPORTUNITY TO GAIN CONFIDENCE WITH HELPING YOUR CHILD'S DEVELOPMENT AND PEER SUPPORT



Lancashire County Council

FAMILY HUBS NETWORK

NEW GROUP ON SATURDAYS @ WEST PADDOCK 9:30-11am FORTNIGHTLY FROM 10/1/26

FREE Snack Provided

For primary aged Children with SEND

COLOURFUL FOOTSTEPS

Free group suitable for primary aged children with SEND

THIS GROUP AIMS TO PROVIDE A SPACE FOR CHILDREN WITH SEND TO DEVELOP SOCIAL AND EMOTIONAL SKILLS ALONG WITH BUILDING THEIR CONFIDENCE AND RESILIENCE. THE SESSION PROVIDES LOTS OF ENGAGING ACTIVITIES BOTH PHYSICAL AND EMOTIONAL FOR THE CHILDREN INCLUDING SOFT PLAY, GAMES AND ARTS & CRAFTS



ST ANNE'S

CATHOLIC PRIMARY SCHOOL



23/01/2026

Lancashire
County Council

LANCASHIRE
**FAMILY
HUB**
NETWORK

SEND

Peer Support Drop In

With Community Seniors/Family Hub Navigator

Every 3rd Wednesday
of the month

9:30am – 11:30am
West Paddock Family
Hub
PR25 1HR

Peer Support drop in
for parents/carers
of children with SEND



Partner agencies will
join some of our drop ins, such as

SENDIAS, Key,
Primary Mental
Health Workers,
ASD Pathway Navigator,
Educational Psychologists,
Barnardo's, Lancashire Positive
Minds and
Lancashire Parent
Career Forum



FREE GROUP
FOR MOBILE
CHILDREN -
4 YEARS



MINI MOVE & GROOVE

These sessions support your child to adopt a healthy lifestyle through physical play and activities, including gross and fine motor skills, dance along songs, games and so much more!

FREE SNACK INCLUDED



CHECK OUT OUR TIMETABLE ON



Lancashire
County Council



LANCASHIRE
**FAMILY
HUBS**
NETWORK

BABY & YOU

No need to book -
just turn up!



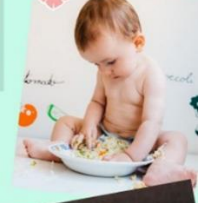
Check out our
timetable on



Baby weigh sessions
on alternate weeks

WHY PLAY WITH US?

We provide lots of exciting activities for you and baby to support your child's brain development. The group provides professional and peer support for new parents/carers. Meet and network with other new parents/carers and their babies to play and discuss key subjects such as safer sleep, ICON, baby brain development, physical development and much more.



SUITABLE FOR NEWBORN -
MOBILE BABIES

Lancashire
County Council

Break Time

Fun group activities for children and young people with SEND in Lancashire

Don't forget!

Registrations will be open from
Monday 27th October 2025
to
Sunday 18th January 2026

Both new and current
members must register!

www.lancashire.gov.uk/SEND



or scan:



lancashire.gov.uk/SEND

Lancashire
County Council

HEADTEACHER: ELIZABETH DARNELL BED HONS NPQH
SLATER LANE, LEYLAND, PRESTON, LANCASHIRE, PR25 1TL
01772 422769 | HEAD@ST-ANNES.LANCS.SCH.UK



WHAT'S ON... Regular Events

MONDAY	9.30-NOON	COFFEE LOUNGE
	10.00-11.30 <i>2nd Monday of month</i>	LEGO (all welcome)
	9.00-NOON	MUMS & TOTS
	1.15-3.30 EVERY 2 WEEKS	WIDOWS WELCOME
	2.00-3.00	Do Fitness
TUESDAY	9.30-NOON	COFFEE LOUNGE
	5.30-7.30	DRAMA GROUP (over 16)
	3.30-5.30 <i>1st Tuesday of Month</i>	LEGO (families)
	6.00 - 8.00 <i>1st Tuesday of Month</i>	LEGO (Adults)
WEDNESDAY	11AM-2PM	WARM SPACE <i>October - April</i>
	12 NOON <i>1ST WED OF MONTH</i>	COMMUNITY LUNCH
THURSDAY	9.30-NOON	COFFEE LOUNGE
	11.15am-12.15pm	DO FITNESS
	1.00-3.00 <i>2ND THURS OF MONTH. BOOKING ESSENTIAL 07880790749</i>	MUSIC & AFTERNOON TEA
	7.00-11.00 <i>LAST THURS OF MONTH</i>	CEILIDH CLUB
FRIDAY	9.30-NOON	COFFEE LOUNGE
	10.00-12NOON	MANKIND MEN'S GROUP



St. Mary's Community Centre What's On

Date	Event	For	
Saturday 11 th October	An Audience with Shaun Wallace	Fundraising for Community Centre & SLEAP	Tickets on sale in Coffee Lounge and Online Doors open @ 7.00pm All ticket event SOLD OUT
Sunday 19 th October	Craft fair	Community & Fundraising	Range of Craft Stalls Open 11.00 – 2.00 Coffee lounge open
Friday 24 th October	Plaque Reveal & Entertainment	The whole Community	Open evening 6.30 – 9.00pm community centre Thanks to everyone who contributed to the new toilet facilities. Uncovering the plaque 7.00
Thursday 30 th October	LEGO & Lunch	Community Families	You arrive 10.30 choose your LEGO build Followed by lunch 12.30 Pizza & Chips Check posters need to book FREE
Friday 31 st October	Pumpkin Party	Community Families	Family Pumpkin Party Any fancy dress – carved pumpkin competition (LED candle only) Hot dogs and snacks for children.
Friday 21 st November	Quiz Night	Community	Doors open 7 for 7.30 start. Teams of up to 5 £1 per head
Friday 12 th December	Bingo	Community and Family	Bingo tickets 50p per book Doors open 6.00 for 6.30 start Hot dogs and snacks for children.
Sunday December 14 th	Children's Christmas Shop	Community Families	Specially selected gifts for children to purchase for parents, grandparents and family Open 11.00 am – 2.00pm
Monday December 22nd	Christmas Film	Community Families	Family Christmas Film Night – early visit from Santa Doors open 6.00 for 6.30 start Hot dogs and snacks for children.