



Today we continued our **new Mission celebrations** by introducing our **new Award** – the Mission Award. Congratulations to the first recipients, Sophie, Uche, Ryleigh, Harry, & Aaliyah. There was also a **very large mystery box** left on the stage.....What could be in it? Guesses ranged from a new school dog (Daisy would not be happy!) toys or a huge award William and Leon opened it for us and the surprise was**new water bottles for the whole school!** They have the new school logo on and fit perfectly in our water bottle holders! Please can parents ensure that these water bottles are returned to school following washing. Many thanks



Reflection for the week



Our new **Instagram page** has been full of stories, photos and videos this week – do give us a Follow ! [stannesprimary_leyland](https://www.instagram.com/stannesprimary_leyland)
It's 'Fun Friday' today!

Please can Parents ensure that large keyrings are left at home. We are seeing more and more and they do take up a lot of room! Many of these are expensive toys, and if they were to be lost or damaged during the school day, it could cause unnecessary upset for the child. Thank you in anticipation of your support in this matter.



A group of our dancers from Years 5 & 6 joined the training for the 'Dance for the Heart' Borough event on Tuesday. The girls represented us amazingly well and they are looking forward to teaching us all the dance ready for the event in June.

June is a long time away so our **Dance Club** will be performing at the **Friday Assembly on the 13th February**. Parents are very welcome to join us! Thank you to Miss Birchall and Mrs Flintoff for leading the club and accompanying the girls to this event.



ST ANNE'S

CATHOLIC PRIMARY SCHOOL



30/01/2026



Congratulations to George and Hermione, our most recent recipients of our 'Light up the room' Award. Vey well deserved to two pupils who always make every day brighter for their classmates and staff!



On Tuesday, After School Club welcomed Justine (Clara's mum!) and Dave from Nando's. They led a range of fun games and activities, teaching the children about the origins of Nando's food as well as the company's eco-friendly values. The children particularly enjoyed the scavenger hunt, and we're sure we've created a few new Nando's fans along the way!





On Parentpay :

Parentpay

Parent Pay is the method we use to collect any payments in school, including school visits. Please contact the office if you have any Parent Pay issues

Activity Clubs February 2026 : Now available to book on Parentpay

Monday 23rd Feb – 23rd March : Multisports Yrs 3,4,5 & 6 For 5 weeks limited to 16 places (FULL)

Tuesday 24th Feb – 24th March : Dance Club Ys 1 & 2 with Miss Birchall and Mrs Flintoff . For 5 weeks limited to 20 places (2 places remaining)

Wednesday 25th Feb – 25th March Rugby Yrs 5 & 6. For 5 weeks limited to 16 places

Thursday 26th Feb – 26th March Family Cooking Club Yrs 2 & 3. For 5 weeks limited to 8 places

Toast is on Parentpay £6.00 for Feb - Mar half term

Year 6 : Towerwood payments



PARENTS
Come and relax

Meet with our
NHS
Primary Mental Health
worker

TALK ABOUT
sleep, mental health health &
wellbeing of children, ADHD &
ASD, anxiety & behaviour
management

Meet with a
Social Prescriber

TALK ABOUT
money worries
housing issues
isolation, loneliness
employment, new skills
diet, exercise
mental health and wellbeing

10th Feb
9-11am
in Anne's Ark



The Children's Commissioner has published a **Guide for parents on managing children's digital lives**. For parents, the challenge is balancing protection from online harm with access to digital spaces essential for learning and play. Each week, I will publish on here a couple of pages from the guide. If you wish to access the guide in full, please see :

<https://www.childrenscommissioner.gov.uk/resource/what-i-wish-my-parents-or-carers-knew-a-guide-for-parents-and-carers-on-managing-childrens-digital-lives/>

CHILDREN'S PREFERRED PLATFORMS & AI TOOLS

Social media platforms

Some platforms and apps have minimum age requirements, but only some of them check that the people who use them are the age they say they are. It is useful for you to know what age your child has to be to use them.

It's important to consider when you think your child is ready to use certain apps or social media platforms, regardless of the age those companies say their platforms are suitable for. You might decide to wait a few years beyond the stated age limit.

Below is information about the top platforms and apps children are using, along with the minimum age required to create an account.

These details are correct at the time of writing (December 2025) but may change. New apps and platforms will also emerge, so keep talking with your child about where they go online.



TikTok

Social media platform for creating and sharing short videos (15 seconds to 3 minutes). Featuring a large 'Discovery' section for finding new content. Age limit: 13.

TikTok shop

Online marketplace where users buy and sell items. Age limit: 18.

TikTok Live

TikTok's livestreaming function. Age limit to broadcast: 18 Age limit to view broadcasts: 13.



Youtube

Social media platform for sharing videos. Age limit to create an account: 13. Age limit to livestream: 16.



Snapchat

Social media app for sending photos, videos, and messages that disappear after viewing. It has a 'Find Friends' feature to add contacts and optional location sharing. Age limit: 13.



Instagram

An image and short-form video sharing social networking site. Instagram has a 'for you' page where users can explore posts curated by an algorithm. Age limit: 13. Instagram Live age limit: 16.



Roblox

Gaming platform where users can create, share, and play games together. It includes 'Robux,' which allows in-app purchases for avatars or worlds. No minimum age, but staggered protections for certain functions.



X

Formerly known as Twitter, a social media site where users communicate through short messages. Age limit: 13.



Reddit

Social networking site where users can share media in different communities, usually arranged by specific interests, e.g. football. Topics containing content that is harmful to children under the Online Safety Act (including pornography) are subject to age verification. Age limit: 13.



Twitch

Livestreaming service where users stream or broadcast to each other. Age limit: 13.



Pinterest

Social media platform which allows users to create virtual pinboards and view other people's images. Age limit: 13.



Quora

Social networking site where users can ask and answer questions of each other. Age limit: 13.



AI tools

Below is information on the top AI tools children are using and their minimum age requirements at the time of writing (December 2025). These may change, and new tools may emerge, so keep talking with your child and checking their security settings.



ChatGPT

A generative AI chatbot designed by OpenAI. ChatGPT can create conversational responses to user-generated prompts. Age limit: 13. Parental consent is required for users under 18.



Microsoft's Copilot

An AI assistant that creates text, images and finds documents, among other tasks. Age limit: 13.



Snapchat's MyAI

Snapchat's built in AI chatbot. It uses OpenAI's GPT technology. Age limit: 13.



Gauth

An AI powered study assistant designed to help students with homework. It offers solutions, explanations and access to tutors. Age limit: 13.



Google's Gemini

An AI tool that creates words, images and answers. Age limit: none for free version; premium-model AI App Plan: 18.

(character.ai)

Character AI

An AI chatbot that takes on specific characters, rather than answers in a general chatbot style. Some versions of the tool are for users aged 18+ and age verification is required to access that part of the tool. Age limit: 13.

VIGGLE

ViggleAI

An AI powered image generator, which allows users to create dynamic videos out of static images. Age limit: none. (Parental consent is required for users under 18)



Sora

An AI tool that generates videos using text-based prompts. Age limit: 13 (with parental consent) or 18.

Age Assurance

It is useful to know whether ages are checked on the platforms, apps and AI tools your child is using.

A process for determining age.

Some platforms, apps and AI tools are not appropriate for children or children under the age of 13. Some of these tools have minimum age requirements, but only some of them check that the people who use them are the age they say they are.

There are three ways of assuring age, from most to least accurate: age verification, age inference, and age estimation.

1. Age verification

Requires proof of age, for example a government ID document.

2. Age inference

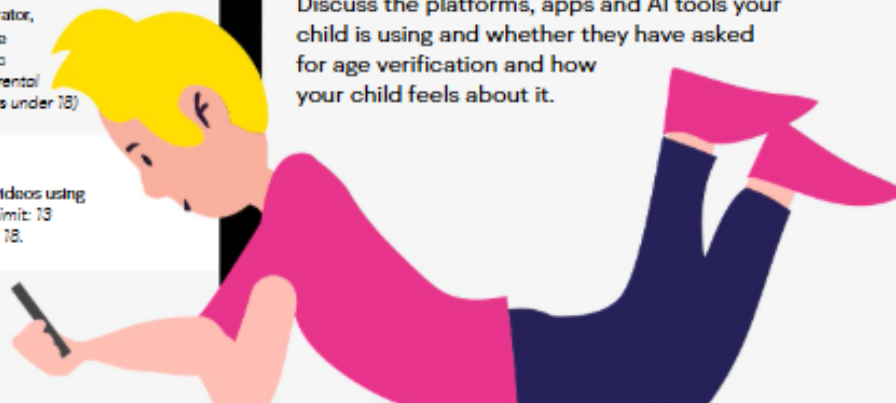
Uses data provided by the user to infer their age, for example the search terms or the language they use.

3. Age estimation

Determination of age range, using unverified sources such as facial scans.

The Children's Commissioner does not recognise methods such as checking a box or asking a user to enter their date of birth, as an accurate method of age assurance or verification.

Discuss the platforms, apps and AI tools your child is using and whether they have asked for age verification and how your child feels about it.





CONVERSATION STARTERS

It's important to regularly talk to your children about these topics, as they are part of their everyday lives.

Create a culture of openness, curiosity, and approachability so your child feels comfortable coming to you with problems. Here are some suggestions for conversation starters from my Youth Ambassadors and Youth SEND panel:

#AsktheAwkward is an online project to help parents start conversations about online relationships with their teens.

What did you see on [insert platform e.g. Snapchat] today?

Refer to [page 20](#) for a list of platforms

Can you show me to how to use (this platform)?

What do you think might worry me about you being online? What might worry you about me being online?

Do you think a family agreement for online use is a good idea? How might this look for us?

How much do you think I should know about what you do online?

Do people say things online they wouldn't say in person? Why?

I saw something strange online today and thought I would check in to see how you are feeling when online

Who do you feel comfortable talking to about things you see online? Do you know who you could turn to if you needed to? It doesn't have to be me — I just want to make sure you have someone you can rely on.

Why do you think managing your screen time is important? How might your sleep or social life be affected if you didn't?

CREATE THE CULTURE BEFORE THE CRISIS



CHECKLIST

How I am taking action to help my child



Have discussions and conversations

- Discuss apps and platforms being used
- Agree your ground rules and discuss the reasoning behind them
- Decide a joint time to go screen free and plan something to do together
- Share experiences of the online world
- Prepare a list of potential questions and issues you are concerned about that you would like to discuss
- Start conversations and normalise talking about online habits and experiences
- Discuss the tips for managing screen time in the accompanying activity pack with your child
- Go through the 'reach out for support' section of the activity pack after completing the 'my support network' activity with your child

Do activities

- Share our accompanying **activity pack** for young people with your child and try the activities
- Go through our Digital 5 a day in the **activity pack** together
- Watch an **#AsktheAwkward video**

Increase your knowledge

- Find out information about the apps and platforms your child is on
- Look at the resources and further information

Reflect

- Plan a way to re-evaluate ground rules and open up discussions around social media use
- Reflect on your own phone usage and how you can role model behavior for your child



Children aged 13+ who would like to find out more about the work of the Children's Commissioner and take part in opportunities to share their voice, can join the Youth Voices Forum.





Diary Dates

We do like to provide diary dates as far in advance as possible but please keep checking as some dates may change and new dates will be added

Monday 2nd February : Year 3 visit to Manchester Museum
 Friday 6th February : Y6 Class Assembly
 Friday 6th February : Reception Class Welcome afternoon for Parents.
 Thursday 12th February : Year 1 & 2 visit to Imagine That! Liverpool
Friday 13th February : Dance Club performance at Friday Assembly 9am
 Friday 13th February : Runshaw College Performances for the whole school
 Friday 13th February : School closes at 3.20pm (6pm ASC) for the half-term holiday
 Monday 23rd February : School reopens at 8.45am (7.45am Breakfast Club)
 Thursday 5th March : Bikeability Year 5
 Thursday 12th March : Bikeability Year 5
 Wednesday 18th March : Year 5 visit to Catalyst Science Discovery Centre
 Thursday 19th March : Year 5 Lancashire Sings Workshop
 Thursday 19th March : Easter Bingo
 Monday 23rd March : Year 3 & 4 Production of Joseph and his Amazing Technicolour Dreamcoat 10am & 6pm
 Friday 27th March : Whole School Talent Show
 Friday 27th March : Rock Steady Concert 2.30pm
 Friday 27th March : School closes for Easter 3.20pm (4.30pm ASC)

Messages not to be missed!

The School car park

We are very fortunate to have a large car park which we allow parents/visitors to make use of. This can only remain the case if all car park users adhere to our safety rules. Any parents/visitors to school wishing to use the school car park **MUST park only in designated bays. Disability marked spaces are only to be used by holders of a blue badge.** If car park users choose not to follow these safety rules, you will be asked to move your car. Please understand, anyone asking you to move your vehicle is doing this for the safety of our school community.

Scooters (electric or otherwise) and bikes are not permitted to be ridden on the school premises. This is to safeguard all in the community, especially our younger members. Many thanks in anticipation of your support.

Contacts

Please inform the School Office of any changes to address, telephone numbers, emergency contacts etc.. as soon as possible.
 Thank you

Uniform

Please ensure all uniform is labelled so any lost items can be returned. If anyone requires any 'good as new' uniform, we have a good stock in school of generously donated items so please speak to Lisa or ask at the office. Any further donations would be gratefully received.



Communication

Our School website information about school, our routines and our policies. Newsletter links are emailed and App messaged weekly on a Friday and are also available on the website. If you have any questions about anything, please do contact the school office. If you wish to speak with your child's class teacher, please contact the school office to make an appointment. We believe in working closely with children, parents and families and welcome your ideas and views.

Medications

If your child suffers with asthma and has an inhaler, please bring a labelled inhaler to the school office to complete the medical forms for us to retain in school.

Lancashire
County Council

Lancashire
County Council

FAMILY HUBS NETWORK

You are warmly invited to

West Paddock's Warm and Welcome

Tuesday's 15:30 - 16:30

Come along for a warm welcome from the
Children's and Family Wellbeing Service

Lancashire
County Council

FAMILY HUBS NETWORK

**THE CENTRE FOR
EMOTIONAL
HEALTH**

Lancashire
County Council

Nurture Parenting is a 10 week course that emphasises the importance of emotional support, positive discipline, and strong parent-child relationships in a child's development.

Nurture Parenting focuses on creating a safe and loving environment where children feel valued and understood.

Key elements include: Emotional Health, Positive Discipline, Empathy and Understanding and Quality Parenting .

Please scan the QR code to book a place.



ST ANNE'S

CATHOLIC PRIMARY SCHOOL



30/01/2026



Riding the Rapids is a free 10 week course for parents/carers of children and young people with a diagnosis of Autism, a severe learning disability or those who are on the pathway.



The course aims to help parents to understand and support their child's behaviour, in the context of additional needs.



The course is delivered to parents/carers of children who are within primary education.



Please scan the QR code to book a place.



ONE STOP SHOP

A monthly drop in for families to access advice and support.



Primary Mental Health Team

No need to book, Just turn up



21/01/26
18/2/26
18/3/26

3rd Wednesday of the month
9:30 - 11:30am

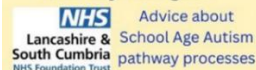
School Nurse



we are withyou



Pathway Navigator



Advice about School Age Autism pathway processes



West Paddock Family Hub
West Paddock
Leyland, PR25 1HR



Weigh Stay & Play

We provide lots of exciting activities for you and baby to support your child's brain development. The group provides professional and peer support for new parents/carers. Discuss key subjects such as safer sleep, ICON, baby brain development, physical development and much more.



Check out our timetable on



Magical Moments

Magical Moments welcomes all children aged 0-5 who have Special Educational needs or Disabilities, or are awaiting assessment and would benefit from our calm and supportive space



The group offers free and structured play to help with development plus a supportive atmosphere for parents and carers. Siblings also welcome.

FREE snack provided



Check out our timetable on





ST ANNE'S

CATHOLIC PRIMARY SCHOOL



30/01/2026

BABY SENSORY



CHECK OUT OUR TIMETABLE ON



SPECIALLY SELECTED ACTIVITIES TO HELP STIMULATE AND DEVELOP YOUR BABIES SENSES AND LEARNING THROUGH PLAY.



MEET OTHER PARENTS/CARERS WITH BABIES OF A SIMILAR AGE AND YOU NEVER KNOW, YOU OR YOUR BABY MIGHT END UP MAKING LIFELONG FRIENDS!



NO NEED TO BOOK - JUST TURN UP!

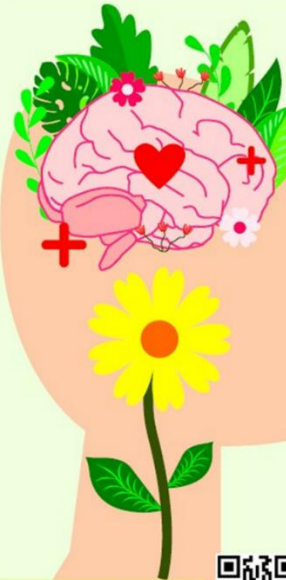


HORIZONS

DO YOU SUFFER WITH LOW MOOD?

FEEL LIKE YOU NEED SOME SUPPORT?

HORIZONS IS A FREE, FRIENDLY GROUP FOR ALL PARENTS WHO ARE STRUGGLING WITH THEIR EMOTIONAL HEALTH AND WELLBEING AND WOULD LIKE SOME SUPPORT FROM OUR FRIENDLY STAFF



WE OFFER A SAFE ENVIRONMENT, USING HOLISTIC METHODS TO SHOW YOU HOW EVEN THE SIMPLEST OF THINGS CAN IMPROVE YOUR WELLBEING AND HELP YOURSELF & YOUR FAMILY TOO!

CONNECT WITH OTHERS. HAVING A SUPPORT SYSTEM IS CRUCIAL FOR GOOD MENTAL HEALTH. REACH OUT TO FRIENDS, FAMILY, OR A MENTAL HEALTH PROFESSIONAL IF YOU NEED TO TALK OR RECEIVE GUIDANCE.

SCAN THE QR CODE TO BOOK ON OR VISIT



WWW.LANCASHIRE.GOV.UK/EVENTS



YOU'RE INVITED TO JOIN

STORY CORNER



CHECK OUT OUR TIMETABLE ON



COME AND JOIN US FOR A FREE, FUN AND INTERACTIVE GROUP TO HELP YOUR TODDLER GET SCHOOL READY!



FREE SNACK INCLUDED! SUITABLE FOR MOBILE CHILDREN - 4 YEARS



THIS GROUP INVOLVES DEVELOPING CHILDREN'S COMMUNICATION AND LANGUAGE SKILLS THROUGH READING, RHYMES AND IMAGINATIVE PLAY

THIS GROUP GIVES PARENTS THE OPPORTUNITY TO GAIN CONFIDENCE WITH HELPING YOUR CHILD'S DEVELOPMENT AND PEER SUPPORT




Lancashire County Council

FAMILY HUBS NETWORK

NEW GROUP ON SATURDAYS @ WEST PADDOCK 9:30-11am FORTNIGHTLY FROM 10/1/26

FREE Snack Provided

For primary aged Children with SEND

COLOURFUL FOOTSTEPS

Free group suitable for primary aged children with SEND

THIS GROUP AIMS TO PROVIDE A SPACE FOR CHILDREN WITH SEND TO DEVELOP SOCIAL AND EMOTIONAL SKILLS ALONG WITH BUILDING THEIR CONFIDENCE AND RESILIENCE. THE SESSION PROVIDES LOTS OF ENGAGING ACTIVITIES BOTH PHYSICAL AND EMOTIONAL FOR THE CHILDREN INCLUDING SOFT PLAY, GAMES AND ARTS & CRAFTS



ST ANNE'S

CATHOLIC PRIMARY SCHOOL



30/01/2026

Lancashire
County Council

LANCASHIRE
**FAMILY
HUB
NETWORK**

SEND

Peer Support Drop In

With Community Seniors/Family Hub Navigator

Every 3rd Wednesday
of the month

9:30am - 11:30am
West Paddock Family
Hub
PR25 1HR

Peer Support drop in
for parents/carers
of children with SEND



Partner agencies will
join some of our drop ins, such as

SENDIAS, Key,
Primary Mental
Health Workers,
ASD Pathway Navigator,
Educational Psychologists,
Barnardo's, Lancashire Positive
Minds and
Lancashire Parent
Career Forum



**FREE GROUP
FOR MOBILE
CHILDREN -
4 YEARS**

**MINI MOVE
& GROOVE**

These sessions support your child to adopt a healthy lifestyle through physical play and activities, including gross and fine motor skills, dance along songs, games and so much more!

FREE SNACK INCLUDED

CHECK OUT OUR TIMETABLE ON

LANCASHIRE
**FAMILY
HUBS
NETWORK**

Lancashire
County Council

LANCASHIRE
**FAMILY
HUBS
NETWORK**

BABY & YOU

No need to book -
just turn up!



Check out our
timetable on

Baby weigh sessions
on alternate weeks

WHY PLAY WITH US?

We provide lots of exciting activities for you and baby to support your child's brain development. The group provides professional and peer support for new parents/carers. Meet and network with other new parents/carers and their babies to play and discuss key subjects such as safer sleep, ICON, baby brain development, physical development and much more.

SUITABLE FOR NEWBORN -
MOBILE BABIES

Lancashire
County Council



Break Time

Fun group activities for children and young people with SEND in Lancashire

Don't forget!

Registrations will be open from
Monday 27th October 2025
to
Sunday 18th January 2026

Both new and current
members must register!

www.lancashire.gov.uk/SEND



or scan:



lancashire.gov.uk/SEND

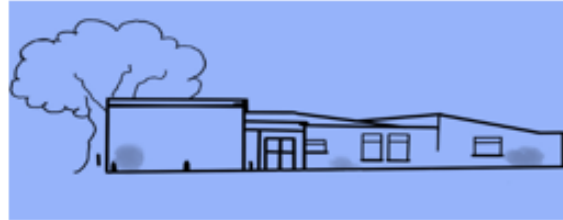
Lancashire
County Council

HEADTEACHER: ELIZABETH DARNELL BED HONS NPQH
SLATER LANE, LEYLAND, PRESTON, LANCASHIRE, PR25 1TL
01772 422769 | HEAD@ST-ANNES.LANCS.SCH.UK



WHAT'S ON... Regular Events

MONDAY	9.30-NOON	COFFEE LOUNGE
	10.00-11.30 2 nd Monday of month	LEGO (all welcome)
	9.00-NOON	MUMS & TOTS
	1.15-3.30 EVERY 2 WEEKS	WIDOWS WELCOME
	2.00-3.00	Do Fitness
TUESDAY	9.30-NOON	COFFEE LOUNGE
	5.30-7.30	DRAMA GROUP (over 16)
	3.30-5.30 1 st Tuesday of Month	LEGO (families)
	6.00 - 8.00 1 st Tuesday of Month	LEGO (Adults)
WEDNESDAY	11AM-2PM	WARM SPACE October - April
	12 NOON 1 ST WED OF MONTH	COMMUNITY LUNCH
THURSDAY	9.30-NOON	COFFEE LOUNGE
	11.15am-12.15pm	DO FITNESS
	1.00-3.00 2 ND THURS OF MONTH. BOOKING ESSENTIAL 07880790749	MUSIC & AFTERNOON TEA
	7.00-11.00 LAST THURS OF MONTH	CEILIDH CLUB
FRIDAY	9.30-NOON	COFFEE LOUNGE
	10.00-12NOON	MANKIND MEN'S GROUP



St. Mary's Community Centre What's On

Date	Event	For	
Saturday 11 th October	An Audience with Shaun Wallace	Fundraising for Community Centre & SLEAP	Tickets on sale in Coffee Lounge and Online Doors open @ 7.00pm All ticket event SOLD OUT
Sunday 19 th October	Craft fair	Community & Fundraising	Range of Craft Stalls Open 11.00 – 2.00 Coffee lounge open
Friday 24 th October	Plaque Reveal & Entertainment	The whole Community	Open evening 6.30 – 9.00pm community centre Thanks to everyone who contributed to the new toilet facilities. Uncovering the plaque 7.00
Thursday 30 th October	LEGO & Lunch	Community Families	You arrive 10.30 choose your LEGO build Followed by lunch 12.30 Pizza & Chips Check posters need to book FREE
Friday 31 st October	Pumpkin Party	Community Families	Family Pumpkin Party Any fancy dress – carved pumpkin competition (LED candle only) Hot dogs and snacks for children.
Friday 21 st November	Quiz Night	Community	Doors open 7 for 7.30 start. Teams of up to 5 £1 per head
Friday 12 th December	Bingo	Community and Family	Bingo tickets 50p per book Doors open 6.00 for 6.30 start Hot dogs and snacks for children.
Sunday December 14 th	Children's Christmas Shop	Community Families	Specially selected gifts for children to purchase for parents, grandparents and family Open 11.00 am – 2.00pm
Monday December 22nd	Christmas Film	Community Families	Family Christmas Film Night – early visit from Santa Doors open 6.00 for 6.30 start Hot dogs and snacks for children.