



Runshaw Showtime!!

This afternoon we welcomed students from Runshaw College who performed their two plays for us – *Freddie & The Fairy* and *A very Victorian Adventure*. Both were amazing productions with such talented young people performing – a great end to our half-term!



Reflection for the week



Instagram – do give us a follow!



Playground

Thank you for adapting around all the work! The weather was against us on Wednesday, otherwise it would be finished. We hope it will be ready after the holidays.

The Dance Club performed brilliantly at this morning's assembly - so lovely to see the result of all your hard work! Many thanks to our Young Leaders : Edie, Willow, Isobel & Aisha for their great choreography and to Miss Birchall and Mrs Flintoff for their time given to running the club.



Mother's Day Celebration!



We would love to invite you to our Mother's Day Celebration on Friday 13th March at 2pm

On Friday 13th March we would love to invite all Mother's (or Father's or Grandparents!) to a special, whole school celebration! Every class will be providing entertainment and then you are invited to join the children in their classes for a themed activity and refreshments . We will be putting siblings together in the same classroom so there will be no need to split yourself! We are expecting this to be a popular event so we do need to limit visitors to two guests per family. Save the date!





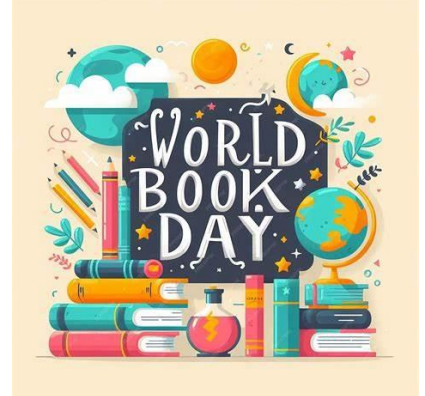
13/02/2026

Year 1 & 2 enjoyed a fantastic trip to 'Imagine That' in Liverpool Yesterday! Thank you to Mrs Wilkinson for organising this visit and a huge thank you to all our volunteers who helped us – these trips couldn't happen without you! There's a fantastic reel of photos and videos on our Instagram page!



We will be celebrating **WORLD BOOK DAY** on the 6th March

We can't wait to welcome you into school for a day of fun-filled activities! We would love for you to join the fun and dress up as your favourite book character for the day. Please ensure you have sensible footwear and a coat for playtime.





High Achievers!

Class	St Anne's	St Anselm's	St Edmund's	St Benedict's
Rec	Toby Baldwin	Chester Ashworth	Eason Duong & Orla Derry	William Minorczyk
1	Brody Marsden	Freya Waidson	Franklin Dale	Jake Innes & Darcy Anderton
2	Emily Salisbury & Lucy Keegan	Bladen l'Anson	Imogen Fothergill & Jude Whitfield	Tommy Swindells
3	Charlotte Davie	Sahana Patel	Avah Hardman	Theodore Marsden
4	Ariah Asare	Jaymin Modasia	Damon Sinclair	Christopher Ledson
5	Freda Perrai	Sianna Patel	Edie Truesdale	Ruensa Alija
6	Tommy Keegan	Zoe Armstrong	Martha Craig, Logan Jennis-Bailey & Hermione Melling	Arthur Bentham

These will be awarded on Friday 27th February

On Parentpay :

Parent Pay is the method we use to collect any payments in school, including school visits. Please contact the office if you have any Parent Pay issues

New!

Last 3 days to order toast for the next half-term

Year 4 Trip to Sea Life Centre Manchester

Activity Clubs February – March 2026 : Now available to book on Parentpay

School Meals : The price of these will increase from the 1st April to £3.00 inline with the Local Authority guidance.

Monday 23rd Feb – 23rd March : Multisports Yrs 3,4,5 & 6 For 5 weeks limited to 16 places (FULL)

Tuesday 24th Feb – 24th March : Dance Club Ys 1 & 2 with Miss Birchall and Mrs Flintoff . For 5 weeks limited to 20 places (2 places remaining)

Wednesday 25th Feb – 25th March Rugby Yrs 5 & 6. For 5 weeks limited to 16 places

Thursday 26th Feb – 26th March Family Cooking Club Yrs 2 & 3. For 5 weeks limited to 8 places

Year 6 : Towerwood payments



Diary Dates

We do like to provide diary dates as far in advance as possible but please keep checking as some dates may change and new dates will be added

Friday 13th February : Dance Club performance at Friday Assembly 9am

Friday 13th February : Runshaw College Performances for the whole school

Friday 13th February : School closes at 3.20pm (6pm ASC) for the half-term holiday

Monday 23rd February : School reopens at 8.45am (7.45am Breakfast Club)

Thursday 5th March : Bikeability Year 5

Thursday 12th March : Bikeability Year 5

Friday 13th March : Mother's Day Celebration 2pm

Wednesday 18th March : Year 5 visit to Catalyst Science Discovery Centre

Thursday 19th March : Year 5 Lancashire Sings Workshop

Thursday 19th March : Easter Bingo

Monday 23rd March : Year 3 & 4 Production of Joseph and his Amazing Technicolour Dreamcoat 10am & 6pm

Friday 27th March : Whole School Talent Show

Friday 27th March : Rock Steady Concert 2.30pm

Friday 27th March : School closes for Easter 3.20pm (4.30pm ASC)

Messages not to be missed!

The School car park

We are very fortunate to have a large car park which we allow parents/visitors to make use of. This can only remain the case if all car park users adhere to our safety rules. Any parents/visitors to school wishing to use the school car park **MUST park only in designated bays. Disability marked spaces are only to be used by holders of a blue badge.** If car park users choose not to follow these safety rules, you will be asked to move your car. Please understand, anyone asking you to move your vehicle is doing this for the safety of our school community.

Scooters (electric or otherwise) and bikes are not permitted to be ridden on the school premises. This is to safeguard all in the community, especially our younger members. Many thanks in anticipation of your support.

Contacts

Please inform the School Office of any changes to address, telephone numbers, emergency contacts etc.. as soon as possible.

Thank you

Uniform

Please ensure all uniform is labelled so any lost items can be returned. If anyone requires any 'good as new' uniform, we have a good stock in school of generously donated items so please speak to Lisa or ask at the office. Any further donations would be gratefully received.

Communication

Our School website information about school, our routines and our policies. Newsletter links are emailed and App messaged weekly on a Friday and are also available on the website. If you have any questions about anything, please do contact the school office. If you wish to speak with your child's



class teacher, please contact the school office to make an appointment. We believe in working closely with children, parents and families and welcome your ideas and views.

Medications

If your child suffers with asthma and has an inhaler, please bring a labelled inhaler to the school office to complete the medical forms for us to retain in school.

Lancashire County Council **FAMILY HUBS NETWORK**

You are warmly invited to

West Paddock's Warm and Welcome

Tuesday's 15:30 - 16:30

Come along for a warm welcome from the Children's and Family Wellbeing Service

Lancashire County Council **FAMILY HUBS NETWORK** **THE CENTRE FOR EMOTIONAL HEALTH**

Nurture Parenting is a 10 week course that emphasises the importance of emotional support, positive discipline, and strong parent-child relationships in a child's development.

Nurture Parenting focuses on creating a safe and loving environment where children feel valued and understood.

Key elements include: Emotional Health, Positive Discipline, Empathy and Understanding and Quality Parenting .

Please scan the QR code to book a place.



ST ANNE'S

CATHOLIC PRIMARY SCHOOL



13/02/2026



Riding the Rapids is a free 10 week course for parents/carers of children and young people with a diagnosis of Autism, a severe learning disability or those who are on the pathway.



The course aims to help parents to understand and support their child's behaviour, in the context of additional needs.



The course is delivered to parents/carers of children who are within primary education.



Please scan the QR code to book a place.



ONE STOP SHOP

A monthly drop in for families to access advice and support.



Primary Mental Health Team

No need to book,
Just turn up



21/01/26
18/2/26
18/3/26

3rd
Wednesday
of the month
9:30 -
11:30am

School Nurse



we are withyou



Pathway Navigator



Advice about School Age Autism pathway processes



West Paddock Family Hub
West Paddock
Leyland, PR25 1HR



Weigh Stay & Play

We provide lots of exciting activities for you and baby to support your child's brain development. The group provides professional and peer support for new parents/carers. Discuss key subjects such as safer sleep, ICON, baby brain development, physical development and much more.



Check out our timetable on



Magical Moments

Magical Moments welcomes all children aged 0-5 who have Special Educational needs or Disabilities, or are awaiting assessment and would benefit from our calm and supportive space



The group offers free and structured play to help with development plus a supportive atmosphere for parents and carers. Siblings also welcome.

FREE snack provided



Check out our timetable on





ST ANNE'S

CATHOLIC PRIMARY SCHOOL



13/02/2026

BABY SENSORY



CHECK OUT OUR TIMETABLE ON



SPECIALLY SELECTED ACTIVITIES TO HELP STIMULATE AND DEVELOP YOUR BABIES SENSES AND LEARNING THROUGH PLAY.



MEET OTHER PARENTS/CARERS WITH BABIES OF A SIMILAR AGE AND YOU NEVER KNOW, YOU OR YOUR BABY MIGHT END UP MAKING LIFELONG FRIENDS!



NO NEED TO BOOK - JUST TURN UP!

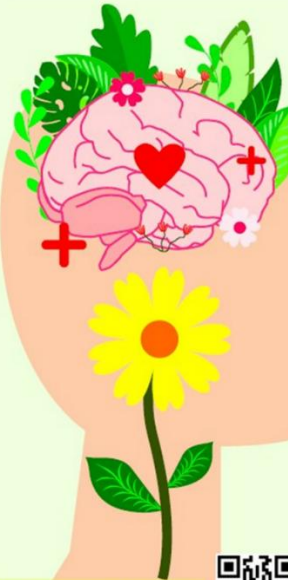


HORIZONS

DO YOU SUFFER WITH LOW MOOD?

FEEL LIKE YOU NEED SOME SUPPORT?

HORIZONS IS A FREE, FRIENDLY GROUP FOR ALL PARENTS WHO ARE STRUGGLING WITH THEIR EMOTIONAL HEALTH AND WELLBEING AND WOULD LIKE SOME SUPPORT FROM OUR FRIENDLY STAFF



WE OFFER A SAFE ENVIRONMENT, USING HOLISTIC METHODS TO SHOW YOU HOW EVEN THE SIMPLEST OF THINGS CAN IMPROVE YOUR WELLBEING AND HELP YOURSELF & YOUR FAMILY TOO!

CONNECT WITH OTHERS. HAVING A SUPPORT SYSTEM IS CRUCIAL FOR GOOD MENTAL HEALTH. REACH OUT TO FRIENDS, FAMILY, OR A MENTAL HEALTH PROFESSIONAL IF YOU NEED TO TALK OR RECEIVE GUIDANCE.

SCAN THE QR CODE TO BOOK ON OR VISIT



WWW.LANCASHIRE.GOV.UK/EVENTS



YOU'RE INVITED TO JOIN

STORY CORNER



CHECK OUT OUR TIMETABLE ON



COME AND JOIN US FOR A FREE, FUN AND INTERACTIVE GROUP TO HELP YOUR TODDLER GET SCHOOL READY!



FREE SNACK INCLUDED! SUITABLE FOR MOBILE CHILDREN - 4 YEARS



THIS GROUP INVOLVES DEVELOPING CHILDREN'S COMMUNICATION AND LANGUAGE SKILLS THROUGH READING, RHYMES AND IMAGINATIVE PLAY

THIS GROUP GIVES PARENTS THE OPPORTUNITY TO GAIN CONFIDENCE WITH HELPING YOUR CHILD'S DEVELOPMENT AND PEER SUPPORT






FREE Snack Provided

NEW GROUP ON SATURDAYS @ WEST PADDOCK 9:30-11am FORTNIGHTLY FROM 10/1/26

For primary aged Children with SEND



COLOURFUL FOOTSTEPS

Free group suitable for primary aged children with SEND

THIS GROUP AIMS TO PROVIDE A SPACE FOR CHILDREN WITH SEND TO DEVELOP SOCIAL AND EMOTIONAL SKILLS ALONG WITH BUILDING THEIR CONFIDENCE AND RESILIENCE. THE SESSION PROVIDES LOTS OF ENGAGING ACTIVITIES BOTH PHYSICAL AND EMOTIONAL FOR THE CHILDREN INCLUDING SOFT PLAY, GAMES AND ARTS & CRAFTS



ST ANNE'S

CATHOLIC PRIMARY SCHOOL



13/02/2026

Lancashire
County Council

LANCASHIRE
**FAMILY
HUB**
NETWORK

SEND

Peer Support Drop In

With Community Seniors/Family Hub Navigator

Every 3rd Wednesday
of the month

9:30am - 11:30am
West Paddock Family
Hub
PR25 1HR

Peer Support drop in
for parents/carers
of children with SEND



Partner agencies will
join some of our drop ins, such as

SENDIAS, Key,
Primary Mental
Health Workers,
ASD Pathway Navigator,
Educational Psychologists,
Barnardo's, Lancashire Positive
Minds and
Lancashire Parent
Career Forum



**FREE GROUP
FOR MOBILE
CHILDREN -
4 YEARS**

**MINI MOVE
& GROOVE**

These sessions support your child to adopt a healthy lifestyle through physical play and activities, including gross and fine motor skills, dance along songs, games and so much more!

FREE SNACK INCLUDED

CHECK OUT OUR TIMETABLE ON

LANCASHIRE
**FAMILY
HUBS**
NETWORK

Lancashire
County Council

LANCASHIRE
**FAMILY
HUBS**
NETWORK

BABY & YOU

No need to book -
just turn up!



Check out our
timetable on

Baby weigh sessions
on alternate weeks

WHY PLAY WITH US?

We provide lots of exciting activities for you and baby to support your child's brain development. The group provides professional and peer support for new parents/carers. Meet and network with other new parents/carers and their babies to play and discuss key subjects such as safer sleep, ICON, baby brain development, physical development and much more.

SUITABLE FOR NEWBORN -
MOBILE BABIES

Lancashire
County Council

Break Time

Fun group activities for children and young people with SEND in Lancashire

Don't forget!

Registrations will be open from
Monday 27th October 2025
to
Sunday 18th January 2026

Both new and current
members must register!

www.lancashire.gov.uk/SEND

or scan:

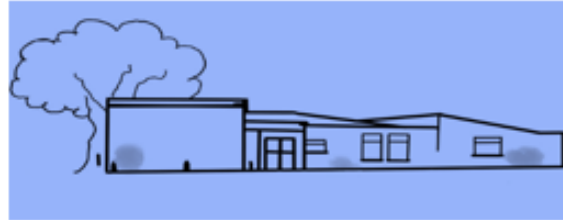
Lancashire
County Council

lancashire.gov.uk/SEND



WHAT'S ON... Regular Events

MONDAY	9.30-NOON	COFFEE LOUNGE
	10.00-11.30 <i>2nd Monday of month</i>	LEGO (all welcome)
	9.00-NOON	MUMS & TOTS
	1.15-3.30 EVERY 2 WEEKS	WIDOWS WELCOME
	2.00-3.00	Do Fitness
TUESDAY	9.30-NOON	COFFEE LOUNGE
	5.30-7.30	DRAMA GROUP (over 16)
	3.30-5.30 <i>1st Tuesday of Month</i>	LEGO (families)
	6.00 - 8.00 <i>1st Tuesday of Month</i>	LEGO (Adults)
WEDNESDAY	11AM-2PM	WARM SPACE <i>October - April</i>
	12 NOON <i>1ST WED OF MONTH</i>	COMMUNITY LUNCH
THURSDAY	9.30-NOON	COFFEE LOUNGE
	11.15am-12.15pm	DO FITNESS
	1.00-3.00 <i>2ND THURS OF MONTH. BOOKING ESSENTIAL 07880790749</i>	MUSIC & AFTERNOON TEA
	7.00-11.00 <i>LAST THURS OF MONTH</i>	CEILIDH CLUB
FRIDAY	9.30-NOON	COFFEE LOUNGE
	10.00-12NOON	MANKIND MEN'S GROUP



St. Mary's Community Centre What's On

Date	Event	For	
Saturday 11 th October	An Audience with Shaun Wallace	Fundraising for Community Centre & SLEAP	Tickets on sale in Coffee Lounge and Online Doors open @ 7.00pm All ticket event SOLD OUT
Sunday 19 th October	Craft fair	Community & Fundraising	Range of Craft Stalls Open 11.00 – 2.00 Coffee lounge open
Friday 24 th October	Plaque Reveal & Entertainment	The whole Community	Open evening 6.30 – 9.00pm community centre Thanks to everyone who contributed to the new toilet facilities. Uncovering the plaque 7.00
Thursday 30 th October	LEGO & Lunch	Community Families	You arrive 10.30 choose your LEGO build Followed by lunch 12.30 Pizza & Chips Check posters need to book FREE
Friday 31 st October	Pumpkin Party	Community Families	Family Pumpkin Party Any fancy dress – carved pumpkin competition (LED candle only) Hot dogs and snacks for children.
Friday 21 st November	Quiz Night	Community	Doors open 7 for 7.30 start. Teams of up to 5 £1 per head
Friday 12 th December	Bingo	Community and Family	Bingo tickets 50p per book Doors open 6.00 for 6.30 start Hot dogs and snacks for children.
Sunday December 14 th	Children's Christmas Shop	Community Families	Specially selected gifts for children to purchase for parents, grandparents and family Open 11.00 am – 2.00pm
Monday December 22nd	Christmas Film	Community Families	Family Christmas Film Night – early visit from Santa Doors open 6.00 for 6.30 start Hot dogs and snacks for children.