



Welcome back! I hope you all enjoyed the half-term holiday!

The children have all come back ready to learn and we've had a great week in school!

Spring Term Parents Evening

This will take place on Wednesday 11th March : 2.30pm - 7.30pm. This evening is a valuable opportunity for you to find out how your child is progressing in school and what their targets for learning are. Appointments will be available to book via your App /Email invitation from Primary Site. Bookings are open from 8am on Monday 2nd March at 9am.



Reflection for the week



Instagram – do give us a follow!
stannesprimary_leyland



We have had to change the date of our Easter Bingo due to a clash of dates with the High School. Our Easter Bingo will now be held on Wednesday 25th March at 5pm

New Collection areas

Please collect the children from the following areas at the end of the day :

EYFS : As usual on the small playground

Year 1 : The Main Entrance

Year 2 : The side gate next to the Office window

Year 3 : Muga left hand side, facing the school

Year 4 Muga right hand side, facing the school

Year 5 : Next to Grizedale

Year 6 : Top left corner of the playground as you face the school.

PE days this half-term

EYFS : Tuesdays, Forest School

Wednesdays

Y1 : Tuesday

Y2 : Wednesday

Y3 : Thursday

Y4 : Wednesday

Y5 : Friday (the next two Thursdays for Bikeability)

Y6 : Thursday

New Library!

It's all happening this term!! Mrs Prytherch and Miss Whittle have been busy researching, choosing and purchasing new books for our new KS2 Reading scheme. Alongside this development we are having our school library refreshed and decorated next week. We place great importance on nurturing our children's love of reading, and at the heart of this is our commitment to providing high-quality, engaging texts that inspire curiosity, imagination and a lifelong enjoyment of books.



Mother's Day Celebration!



We would love to invite you to our Mother's Day Celebration on Friday 13th March at 2pm

On Friday 13th March we would love to invite all Mother's (or Father's or Grandparents!) to a special, whole school celebration! Every class will be providing entertainment and then you are invited to join the children in their classes for a themed activity and refreshments. We will be putting siblings together in the same classroom so there will be no need to split yourself! **We are expecting this to be a popular event so we do need to limit visitors to two guests per family.** Save the date!



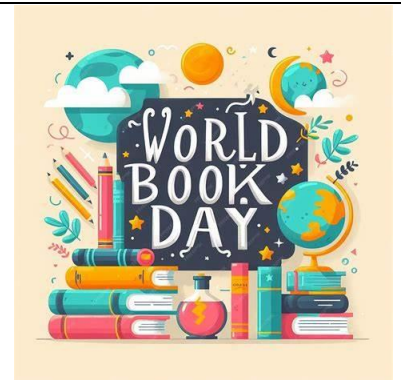
This week we have welcomed Mrs King to our Staff Team. Mrs King is our new SENDCo and she will be in school every Thursday and Friday. If you have any concerns about any special educational need you think your child may have, Mrs King can be contacted by telephone through the school office on 01772 422769 or by email at H.King@st-annes.lancs.sch.uk

We will be celebrating WORLD BOOK DAY on the 6th March

We can't wait to welcome you into school for a day of fun-filled activities! We would love for you to join the fun and dress up as your favourite book character for the day. Please ensure you have sensible footwear and a coat for playtime.



ST ANNE'S BOOK FAIR!



We are looking forward to welcoming parents and children into school every day (from 3.30pm-4pm) from Wednesday 18th March to Tuesday 23rd March for our Book Fair. If you wish to support the book fair, please head to the main office straight after school where you

can explore our range of books and stationery. Payment can be made via cash or online using your card details, however cash is sometimes quicker and easier, depending on how busy the fair is. The book fair will also be open before and after our Year 3 and 4 production on Monday 23rd March.



Lenten Challenge:

Following the huge success of our Cereal Rally for the Leyland Foodbank last year, the Faith Leaders would like to invite each child to bring in a *box of cereal* on *Tuesday 24th March*. We are then going to attempt to recreate our whole school 'cereal box domino rally'!



All donations will then be taken to the Leyland Food Bank to support families in our local community.

High Achievers!

Class	St Anne's	St Anselm's	St Edmund's	St Benedict's
Rec	Matthew Threlfall	Chester Ashworth	Kobi Cotterill	Iona Davidson & Desardo Hasanbashaj
1	Isabelle Cleece	Grayson Rampling Davis	Lottie Price	Noah Garside
2	Emily Salisbury	Bladen l'Anson	Esme Merella, Imogen Fothergill & Jude Whitfield	Jesse Dawson
3	Harper-Lee Singleton	Sahana Patel & Hannah Russell	Lena Szczypta	Vincent Crammen
4	Erin Mein	Jaymin Modasia	Lexi-Mae Thornley	Nina Ofodeme
5	Freda Perrai	Sianna Patel	Edie Truesdale	Millie McIntosh
6	Alice Johnson, Isobel Flood & Jimmy Taylor	Braxton l'Anson	Dominic Otter & Olivia Sinclair	Ollie Hodges

These will be awarded on Friday 6th March



ST ANNE'S
CATHOLIC PRIMARY SCHOOL



27/02/2026

St Anne's Annual Talent Show

This event will be held on Friday 27th March at 9.15am.

This year we are inviting parents of the performers to attend. Auditions are being held from Monday 9th March 23rd March



**KIND HEARTS
BRIGHT MINDS
ONE FAMILY**

TALENT SHOW

Friday 27th March



**Auditions start
Monday 9th March**



On Parentpay :

Parent Pay is the method we use to collect any payments in school, including school visits. Please contact the office if you have any Parent Pay issues

New!

Year 4 Trip to Sea Life Centre Manchester

School Meals : The price of these will increase from the 1st April to £3.00 inline with the Local Authority guidance.

Activity Clubs February – March 2026 :

Monday 23rd Feb – 23rd March : Multisports Yrs 3,4,5 & 6 For 5 weeks limited to 16 places (FULL)

Tuesday 24th Feb – 24th March : Dance Club Ys 1 & 2 with Miss Birchall and Mrs Flintoff . For 5 weeks limited to 20 places (2 places remaining)

Wednesday 25th Feb – 25th March Rugby Yrs 5 & 6. For 5 weeks limited to 16 places

Thursday 26th Feb – 26th March Family Cooking Club Yrs 2 & 3. For 5 weeks limited to 8 places

Year 6 : Towerwood payments

Diary Dates

We do like to provide diary dates as far in advance as possible but please keep checking as some dates may change and new dates will be added

Wednesday 4th March : Lenten Mass 9.15am

Thursday 5th March : Bikeability Year 5

Thursday 5th March : Year 4 visit to Sea Life Manchester

Friday 6th March : World Book Day : Come dressed as your favourite Book Character

Thursday 12th March : Bikeability Year 5

Friday 13th March : Mother's Day Celebration 2pm

Wednesday 18th March : Year 5 visit to Catalyst Science Discovery Centre

Thursday 19th March : Year 5 Lancashire Sings Workshop

Friday 20th March : Non-Uniform Day – Donations of Easter Eggs will be very gratefully received.

Monday 23rd March : Year 3 & 4 Production of Joseph and his Amazing Technicolour Dreamcoat 10am & 6pm

Wednesday 25th March : Easter Bingo : CHANGE OF DATE

Friday 27th March : Whole School Talent Show

Friday 27th March : Rock Steady Concert 2.30pm

Friday 27th March : School closes for Easter 3.20pm (4.30pm ASC)

Messages not to be missed!

The School car park

We are very fortunate to have a large car park which we allow parents/visitors to make use of. This can only remain the case if all car park users adhere to our safety rules. Any parents/visitors to school wishing to use the school car park **MUST park only in designated bays. Disability marked spaces are only to be used by holders of a blue badge.** If car park users choose not to follow these



safety rules, you will be asked to move your car. Please understand, anyone asking you to move your vehicle is doing this for the safety of our school community.

Scooters (electric or otherwise) and bikes are not permitted to be ridden on the school premises. This is to safeguard all in the community, especially our younger members. Many thanks in anticipation of your support.

Contacts

Please inform the School Office of any changes to address, telephone numbers, emergency contacts etc.. as soon as possible.
Thank you

Uniform

Please ensure all uniform is labelled so any lost items can be returned. If anyone requires any 'good as new' uniform, we have a good stock in school of generously donated items so please speak to Lisa or ask at the office. Any further donations would be gratefully received.

Communication

Our School website information about school, our routines and our policies. Newsletter links are emailed and App messaged weekly on a Friday and are also available on the website. If you have any questions about anything, please do contact the school office. If you wish to speak with your child's class teacher, please contact the school office to make an appointment. We believe in working closely with children, parents and families and welcome your ideas and views.

Medications

If your child suffers with asthma and has an inhaler, please bring a labelled inhaler to the school office to complete the medical forms for us to retain in school.

Lancashire County Council
FAMILY HUBS NETWORK

You are warmly invited to
**West Paddock's
Warm and Welcome**

Tuesday's 15:30 - 16:30

Come along for a warm welcome from the
Children's and Family Wellbeing Service

Lancashire County Council
FAMILY HUBS NETWORK
THE CENTRE FOR EMOTIONAL HEALTH

Nurture Parenting is a 10 week course that emphasises the importance of emotional support, positive discipline, and strong parent-child relationships in a child's development.

Nurture Parenting focuses on creating a safe and loving environment where children feel valued and understood.

Key elements include: Emotional Health, Positive Discipline, Empathy and Understanding and Quality Parenting .

Please scan the QR code to book a place.



ST ANNE'S

CATHOLIC PRIMARY SCHOOL



27/02/2026



Riding the Rapids is a free 10 week course for parents/carers of children and young people with a diagnosis of Autism, a severe learning disability or those who are on the pathway.



The course aims to help parents to understand and support their child's behaviour, in the context of additional needs.



The course is delivered to parents/carers of children who are within primary education.



Please scan the QR code to book a place.



ONE STOP SHOP

A monthly drop in for families to access advice and support.



Primary Mental Health Team

No need to book, Just turn up



21/01/26
18/2/26
18/3/26

3rd Wednesday of the month
9:30 - 11:30am

School Nurse



we are withyou



Pathway Navigator



Advice about School Age Autism pathway processes



West Paddock Family Hub
West Paddock
Leyland, PR25 1HR



Weigh Stay & Play

We provide lots of exciting activities for you and baby to support your child's brain development. The group provides professional and peer support for new parents/carers. Discuss key subjects such as safer sleep, ICON, baby brain development, physical development and much more.



Check out our timetable on



Magical Moments

Magical Moments welcomes all children aged 0-5 who have Special Educational needs or Disabilities, or are awaiting assessment and would benefit from our calm and supportive space



The group offers free and structured play to help with development plus a supportive atmosphere for parents and carers. Siblings also welcome.

FREE snack provided



Check out our timetable on





ST ANNE'S

CATHOLIC PRIMARY SCHOOL



27/02/2026

BABY SENSORY



CHECK OUT OUR TIMETABLE ON



SPECIALLY SELECTED ACTIVITIES TO HELP STIMULATE AND DEVELOP YOUR BABIES SENSES AND LEARNING THROUGH PLAY.

MEET OTHER PARENTS/CARERS WITH BABIES OF A SIMILAR AGE AND YOU NEVER KNOW, YOU OR YOUR BABY MIGHT END UP MAKING LIFELONG FRIENDS!



NO NEED TO BOOK - JUST TURN UP!

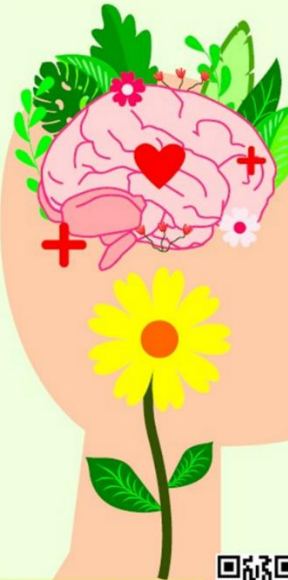


HORIZONS

DO YOU SUFFER WITH LOW MOOD?

FEEL LIKE YOU NEED SOME SUPPORT?

HORIZONS IS A FREE, FRIENDLY GROUP FOR ALL PARENTS WHO ARE STRUGGLING WITH THEIR EMOTIONAL HEALTH AND WELLBEING AND WOULD LIKE SOME SUPPORT FROM OUR FRIENDLY STAFF



WE OFFER A SAFE ENVIRONMENT, USING HOLISTIC METHODS TO SHOW YOU HOW EVEN THE SIMPLEST OF THINGS CAN IMPROVE YOUR WELLBEING AND HELP YOURSELF & YOUR FAMILY TOO!

CONNECT WITH OTHERS. HAVING A SUPPORT SYSTEM IS CRUCIAL FOR GOOD MENTAL HEALTH. REACH OUT TO FRIENDS, FAMILY, OR A MENTAL HEALTH PROFESSIONAL IF YOU NEED TO TALK OR RECEIVE GUIDANCE.

SCAN THE QR CODE TO BOOK ON OR VISIT



WWW.LANCASHIRE.GOV.UK/EVENTS



YOU'RE INVITED TO JOIN

STORY CORNER



CHECK OUT OUR TIMETABLE ON



COME AND JOIN US FOR A FREE, FUN AND INTERACTIVE GROUP TO HELP YOUR TODDLER GET SCHOOL READY!



FREE SNACK INCLUDED! SUITABLE FOR MOBILE CHILDREN - 4 YEARS



THIS GROUP INVOLVES DEVELOPING CHILDREN'S COMMUNICATION AND LANGUAGE SKILLS THROUGH READING, RHYMES AND IMAGINATIVE PLAY

THIS GROUP GIVES PARENTS THE OPPORTUNITY TO GAIN CONFIDENCE WITH HELPING YOUR CHILD'S DEVELOPMENT AND PEER SUPPORT



NEW GROUP ON SATURDAYS @ WEST PADDOCK 9:30-11am FORTNIGHTLY FROM 10/1/26

FREE Snack Provided

For primary aged Children with SEND

COLOURFUL FOOTSTEPS

Free group suitable for primary aged children with SEND

THIS GROUP AIMS TO PROVIDE A SPACE FOR CHILDREN WITH SEND TO DEVELOP SOCIAL AND EMOTIONAL SKILLS ALONG WITH BUILDING THEIR CONFIDENCE AND RESILIENCE. THE SESSION PROVIDES LOTS OF ENGAGING ACTIVITIES BOTH PHYSICAL AND EMOTIONAL FOR THE CHILDREN INCLUDING SOFT PLAY, GAMES AND ARTS & CRAFTS



ST ANNE'S

CATHOLIC PRIMARY SCHOOL



27/02/2026

Lancashire
County Council

LANCASHIRE
**FAMILY
HUB**
NETWORK

SEND

Peer Support Drop In

With Community Seniors/Family Hub Navigator

Every 3rd Wednesday
of the month

9:30am – 11:30am
West Paddock Family
Hub
PR25 1HR

Peer Support drop in
for parents/carers
of children with SEND



Partner agencies will
join some of our drop ins, such as

SENDIAS, Key,
Primary Mental
Health Workers,
ASD Pathway Navigator,
Educational Psychologists,
Barnardo's, Lancashire Positive
Minds and
Lancashire Parent
Career Forum



FREE GROUP FOR MOBILE CHILDREN - 4 YEARS

MINI MOVE & GROOVE

These sessions support your child to adopt a healthy lifestyle through physical play and activities, including gross and fine motor skills, dance along songs, games and so much more!

FREE SNACK INCLUDED

CHECK OUT OUR TIMETABLE ON

LANCASHIRE
**FAMILY
HUBS**
NETWORK

Lancashire
County Council

LANCASHIRE
**FAMILY
HUBS**
NETWORK

BABY & YOU

No need to book -
just turn up!



Check out our
timetable on

Baby weigh sessions
on alternate weeks

WHY PLAY WITH US?

We provide lots of exciting activities for you and baby to support your child's brain development. The group provides professional and peer support for new parents/carers. Meet and network with other new parents/carers and their babies to play and discuss key subjects such as safer sleep, ICON, baby brain development, physical development and much more.

SUITABLE FOR NEWBORN -
MOBILE BABIES

Lancashire
County Council

Break Time

Fun group activities for children and young people with SEND in Lancashire

Don't forget!

Registrations will be open from
Monday 27th October 2025
to
Sunday 18th January 2026

Both new and current
members must register!

www.lancashire.gov.uk/SEND

or scan:

Lancashire
County Council

lancashire.gov.uk/SEND



WHAT'S ON... Regular Events

MONDAY	9.30-NOON	COFFEE LOUNGE
	10.00-11.30 2 nd Monday of month	LEGO (all welcome)
	9.00-NOON	MUMS & TOTS
	1.15-3.30 EVERY 2 WEEKS	WIDOWS WELCOME
	2.00-3.00	Do Fitness
TUESDAY	9.30-NOON	COFFEE LOUNGE
	5.30-7.30	DRAMA GROUP (over 16)
	3.30-5.30 1 st Tuesday of Month	LEGO (families)
	6.00 - 8.00 1 st Tuesday of Month	LEGO (Adults)
WEDNESDAY	11AM-2PM	WARM SPACE October - April
	12 NOON 1 st WED OF MONTH	COMMUNITY LUNCH
THURSDAY	9.30-NOON	COFFEE LOUNGE
	11.15am-12.15pm	DO FITNESS
	1.00-3.00 2 ND THURS OF MONTH. BOOKING ESSENTIAL 07880790749	MUSIC & AFTERNOON TEA
	7.00-11.00 LAST THURS OF MONTH	CEILIDH CLUB
FRIDAY	9.30-NOON	COFFEE LOUNGE
	10.00-12NOON	MANKIND MEN'S GROUP



ST ANNE'S

CATHOLIC PRIMARY SCHOOL



**KIND HEARTS
BRIGHT MINDS
ONE FAMILY**

27/02/2026