



Well done to all of our Year 6 pupils who have completed their Sats this week. Thank you to parents for supporting their child at home with reading and homework – it really does make a difference. They have all worked so hard and should be very proud of what they have achieved.



Reflection for the week

We are God's masterpiece
Ephesians 2:10



Our **Nursery and Reception** children put on an absolutely amazing assembly this morning all about how much they have grown over the year. There were catchy songs, individual videos and many special memories that showed just how far the children have come since September. It was wonderful to see how much their confidence has grown, with them smiling, singing and performing so proudly in front of their families. The children did a fantastic job and should all feel very proud of themselves! A big thank you as well to the Nursery and Reception staff team for all of their hard work and support in helping the children shine and for putting together such a special assembly.



And the fun didn't end there! After inviting all their parents back to enjoy some play and craft time in the EYFS, the children all participated in a Teddy Bear's picnic! The bears were all very well-behaved and they loved all their cuddles – what a fabulous morning!



SLEAP

We are asking for donations of preloved teddy bears to help raise money and awareness for the charity SLEAP, which will be sold at the Leyland Festival. The teddy can be any size, it doesn't matter, but they must be clean and in good condition. Please drop these off at the office.



SUPPORT & LODGINGS FOR YOUNG PEOPLE

SLEAP supports young people aged 16–25 across South Ribble, Chorley, Preston and West Lancashire, providing safe accommodation alongside the guidance and support they need. Their work helps young people move forward with confidence and develop the skills to live independently.



Instagram – do give us a follow!
[stannesprimary_leyland](https://www.instagram.com/stannesprimary_leyland)



Appointments

We have noticed a significant increase in the number of pupils being taken out of school for appointments during the school day. While we understand that some medical and emergency appointments are unavoidable, we ask all parents and carers to make every effort to arrange routine appointments outside of school hours, such as after school, during holidays or at weekends – as the school staff are required to do for themselves and their families. Even a single hour out of school can result in missed teaching, learning discussions and important class activities, and repeated absences quickly add up to a substantial loss of learning time across the year. Moving forward, pupils will only be authorised to leave school during the day for emergency or unavoidable appointments, and evidence of the appointment (such as a letter, text confirmation or appointment card) will be required. Thank you for your continued support in helping us maximise every child's learning time and attendance.

Parentpay

Parent Pay is the method we use to collect any payments in school, including school visits. Please contact the office if you have any Parent Pay issues

NEW Activity Clubs June – July 2026 :

If your child wishes to join any of our clubs, please call in to the school Office.

Monday 8/6/26 – 6/7/26 : Athletics Yrs 1 - 3 (FULL)

Wednesday 3/6/26 – 1/7/26 Multi-sports Yrs 1 – 4 (FULL)

Thursday : 4/6/26 – 2/7/26 Boys Football Yrs 5 & 6 (Spaces available)

Thursday : 4/6/26 – 2/7/26 Rounders Yrs 4 – 6 (FULL)

Thursday : 11/6/26 – 16/7/26 Cookery Club Yrs R - 3 (1 space available)

Toast : Toast for the next half-term is now available to pre-order on Parentpay



Diary Dates

We do like to provide diary dates as far in advance as possible but please keep checking as some dates may change and new dates will be added

Saturday 16th May : First Holy Communion Mass 10am @ St Mary's Church

Monday 18th May : First Holy Communion Party for Year 4 at 2pm

Wednesday 20th May : Class photographs

Friday 22nd May : Celebration Assembly : All Parents are welcome to attend

Friday 22nd May : Half-term finishes at 3.20pm, 6pm for ASC

Monday 1st June : School Closed – INSET day for staff

Tuesday 2nd June : School opens for the Summer term at 8.45am (7.45am Breakfast Club)

Tuesday 2nd June – Friday 12th June Y4 Multiplication check window

Wednesday 3rd June : Sports Day

Monday 8th – Friday 12th June : Year 1 Phonics Screening Check Window

Tuesday 16th June – Friday 19th June : Y6 Towerwood Residential

Friday 19th June : Year 1 Class Assembly

Wednesday 24th June : Dance for the Heart 9.30am

Tuesday 30th June : Good Shepherd Mass @ St Mary's Church 2pm

Thursday 2nd July : Year 6 Taster Day @ St Mary's High School

Thursday 2nd July : Transition Day for all Year groups

Friday 3rd July : Rock Steady Concert at 2.30pm

Tuesday 14th July : Year 5 & 6 Production 10am & 6pm

Please note the following changes of dates – I had accidentally added an extra day to the planned school year!!

Wednesday 15th July : Year 6 Leavers Mass 2.15pm

Thursday 16th July : Y6 Leaver's Assembly 2.15pm

Thursday 16th July : School closes at 3.20pm for the Summer holidays

Your voice matters!

Please take the time to complete the Parental voice form – there is only one box – a space for you to share your praise, compliments, concerns or suggestions you may have about our school. Your comments help us celebrate what is working well and identify ways we can continue to improve. We believe in working closely with children, parents and families and welcome your ideas and views.

: [Parent Feedback – Fill in form](#)

Any suggestions raised will be discussed with staff and any explanations or changes brought out as a result of these, will be communicated via this newsletter.

PE days for Summer 1

Monday : Year 2

Tuesday : EYFS & Year 1

Wednesday : Year 4 & Year 5

Thursday : Year 1 Forest School & Year 3

Friday: Year 6 Forest School



ST ANNE'S

CATHOLIC PRIMARY SCHOOL



15/05/2026

Nut-Free School

As we are seeing an increase of children with nut allergies, St Anne's is now a 'Nut-free' school. Children who suffer from nut allergies can develop a severe, potentially lifethreatening allergic reaction. If someone has a nut allergy, it is not just eating nuts that can cause a severe reaction, just being touched on the skin or smelling the breath of someone who has had nuts or a product containing nuts e.g., Nutella, can trigger an anaphylactic shock which can cause breathing and swallowing difficulties. As a school we have a responsibility to keep all pupils, staff and visitors safe reducing any risk of harm so pupils, staff and visitors must not bring products containing nuts into school either in lunch boxes or as snacks.

The following items must NOT be brought into school in packed lunches or for snacks:

- Packets of nuts
- Peanut butter/Nutella sandwiches
- Cereals / Fruit and cereal bars that contain nuts
- Sesame seed rolls (children allergic to nuts may also have a severe reaction to sesame)
- Cakes made with nuts

This list is not exhaustive, so please check the packaging of products closely. No items containing nuts are prepared in the school kitchen.

Messages not to be missed!

Medications

If your child suffers with asthma and has an inhaler, please bring a labelled inhaler to the school office to complete the medical forms for us to retain in school.

Coach Gunn PRESTON Summer Half Term / Summer Holidays 2026 Multi Sports & Activity Days

Organised and led by Coach Gunn Limited providing ACTIVE TRUSTED CHILDCARE

Wednesdays, Thursdays & Fridays 9am-4pm with FREE extended hours 7:45am-5pm

Harris Primary School
PRESTON
(PR2 7EE)

NEW for 2026
6pm pick up option

Open to children starting Reception in Sept 2026 to current Y7 Boys & Girls

FULL DAY @ £24
HALF DAY @ £15
6PM PICK UP @ +£5

Includes FRIDAYS from Summer Holidays onwards!!!

#FUNwithCoachGunn

School Holidays Club

Harris Primary School

SPORTS & ACTIVITIES include...

- Multi SPORTS
- Zorbs & Floor Surfers
- NERF & Archery
- BOUNCY CASTLE
- Water FUN Games
- Lego & Let's Craft
- Competitions & Prizes
- Climbing & Ropes
- Detective, Tag & Musical Games
- Parachute Games
- Supervised FREE play

...plus lots more FUN & creative activities

Each day will feature the children's favourite activities delivered in a safe & secure environment making the most of the fantastic spaces available encouraging ALL attending children to have lots of #FUNwithFriends

For further information or to make a booking please contact coachmarkgunn@gmail.com / 07912 178917

Name of Child _____ School / Year Group _____ / _____
 Parental Name(s) _____ Mobile(s) _____
 Parental Email(s) _____
 Medical Information - please give details of any important medical information that we should be aware of: _____

I would like my child(ren) to attend Coach Gunn PRESTON 2026 School Holidays Multi Sports & Activity Days on the below date(s) / times at [Harris Primary School](#) & [Woodplumpton St Anne's](#).

Wed 27 th May 2026	Thurs 28 th May 2026	Fri 31 st July 2026
Wed 29 th July 2026	Thurs 30 th July 2026	Fri 7 th August 2026
Wed 5 th August 2026	Thurs 6 th August 2026	Fri 14 th August 2026
Wed 12 th August 2026	Thurs 13 th August 2026	Fri 21 st August 2026
Wed 19 th August 2026	Thurs 20 th August 2026	Fri 28 th August 2026
Wed 26 th August 2026	Thurs 27 th August 2026	Fri 28 th August 2026

Costing per child per day = Full Day up to 5pm = £24 / FULL Day up to 6pm = £29
 HALF DAY 7:45am - 12:30pm = £15 / HALF DAY 12:30pm - 5pm = £15 / HALF DAY + 6pm 12:30pm - 6pm = £20

Payment Method = Cash or cheque (Coach Gunn Limited)
 PayPal (via friends & family please to avoid fees) to coachmarkgunn@gmail.com
 Direct Transfer to Coach Gunn Limited (Santander) 09-01-29 67809950

I agree / don't agree to the publication of images of my child(ren) in the media.
 Signed _____ Date _____

Active Camps

Dodgeball, dance, scooting, cycling, glow sport, soft axe throwing, archery and much more!

Venues:
 Cuerden Church Primary School, PR5 6ED
 Tuesday 26th May to Friday 29th May

Kingsfold Primary School, PR1 9HJ
 Tuesday 26th May to Friday 29th May

All staff enhanced DBS cleared, also safeguarding and first aid trained

Cost per day: £14.00
Cost per block: £52.00

With highly qualified sports coaches and teachers

For booking Visit:
southribble.gov.uk/activecamps

Drop off 8.30am - 9am
 Pick up 4.30pm - 5pm

Funded places available through HAF

Click here to find out more

All children provided with a healthy lunch

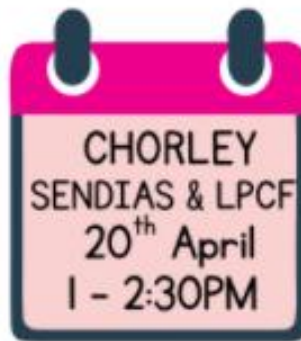


PARENT & CARER PEER SUPPORT

Supporting YOU to support your Young Person with their Mental Health, Wellbeing & Additional Needs.



Unit 2, Balfour Court
PR25 2TF



Duke St. Family Hub
PR7 3DU



Clayton Library
PR6 7EN



Email for link.

"Hearing other parent's journeys and things they have found helpful. A safe space to talk that is non-judgemental. I think it has been excellent".

For more information contact nikih@keycharity.org.uk



SPRING NORTH





ST ANNE'S
CATHOLIC PRIMARY SCHOOL



15/05/2026



CancerHelp's Children and Young People's Service can help.

Has your child been affected by cancer or bereavement?
Do they live in or around Preston, Chorley or South Ribble
and need someone to talk to? ...

Are you a teacher with pastoral care responsibilities
and are worried about one of your pupils?

Call us on **01772 793344**
or email l.lunny@cancerhelppreston.co.uk

Our Team of specialist Children and Young People's Therapists
can provide **FREE** confidential, compassionate support and
are here to listen and help them through troubled times.

Our Vine House support centre is located in Ribbleton, Preston.

HEADTEACHER: ELIZABETH DARNELL BED HONS NPQH
SLATER LANE, LEYLAND, PRESTON, LANCASHIRE, PR25 1TL
01772 422769 | HEAD@ST-ANNES.LANCS.SCH.UK



15/05/2026

Attendance and Punctuality Reminder

Good punctuality is essential so children do not miss valuable learning time at the start of the school day.

Please be reminded that if a pupil arrives after the registers have closed, this is recorded with a '**U**' code (unauthorised late). A 'U' code counts as an **unauthorised absence**.

Unauthorised absences occur when a pupil is late after registers close, and it is these unauthorised absences that are added to other absence data. Ten late marks in a term are recorded as the equivalent of one full day of unauthorised absence.

Attendance is monitored in line with statutory guidance. Where unauthorised absences — including those due to late arrival after registers close — combine with other absence data and reach set thresholds, this may result in further action, including fixed penalty notices.

If you are experiencing difficulties with punctuality, please contact our Family Support Worker - Lisa Sumner on l.sumner@st-annes.lancs.sch.uk or the school office so we can offer support. Thank you for helping your child arrive on time each day.

The School car park

We are very fortunate to have a large car park which we allow parents/visitors to make use of. This can only remain the case if all car park users adhere to our safety rules. Any parents/visitors to school wishing to use the school car park **MUST park only in designated bays. Disability marked spaces are only to be used by holders of a blue badge.** If car park users choose not to follow these safety rules, you will be asked to move your car. Please understand, anyone asking you to move your vehicle is doing this for the safety of our school community.

Scooters (electric or otherwise) and bikes are not permitted to be ridden on the school premises. This is to safeguard all in the community, especially our younger members. Many thanks in anticipation of your support.

Contacts

Please inform the School Office of any changes to address, telephone numbers, emergency contacts etc.. as soon as possible. Thank you

Uniform

Please ensure all uniform is labelled so any lost items can be returned. If anyone requires any 'good as new' uniform, we have a good stock in school of generously donated items so please speak to Lisa or ask at the office. Any further donations would be gratefully received.



Lancashire County Council **FAMILY HUBS NETWORK**

You are warmly invited to

West Paddock's Warm and Welcome




Tuesday's 15:30 - 16:30

Come along for a warm welcome from the Children's and Family Wellbeing Service



Lancashire County Council **FAMILY HUBS NETWORK** **THE CENTRE FOR EMOTIONAL HEALTH** Lancashire County Council

Nurture Parenting is a 10 week course that emphasises the importance of emotional support, positive discipline, and strong parent-child relationships in a child's development.




Nurture Parenting focuses on creating a safe and loving environment where children feel valued and understood.

Key elements include: Emotional Health, Positive Discipline, Empathy and Understanding and Quality Parenting .



Please scan the QR code to book a place.

Lancashire County Council **FAMILY HUBS NETWORK** **RIDING THE RAPIDS** Lancashire County Council

Riding the Rapids is a free 10 week course for parents/carers of children and young people with a diagnosis of Autism, a severe learning disability or those who are on the pathway.



The course aims to help parents to understand and support their child's behaviour, in the context of additional needs.



The course is delivered to parents/carers of children who are within primary education.




Please scan the QR code to book a place.

Lancashire County Council **FAMILY HUBS NETWORK** **Magical Moments**

Magical Moments welcomes all children aged 0-5 who have Special Educational needs or Disabilities, or are awaiting assessment and would benefit from our calm and supportive space



The group offers free and structured play to help with development plus a supportive atmosphere for parents and carers. Siblings also welcome.

FREE snack provided



Check out out timetable on



Lancashire County Council



ST ANNE'S

CATHOLIC PRIMARY SCHOOL



15/05/2026

BABY SENSORY

CHECK OUT OUR TIMETABLE ON



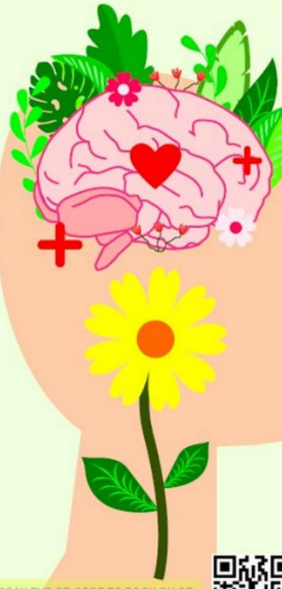
SPECIALLY SELECTED
ACTIVITIES TO HELP
STIMULATE AND DEVELOP
YOUR BABIES SENSES AND
LEARNING THROUGH
PLAY.

MEET OTHER PARENTS/CARERS
WITH BABIES OF A SIMILAR AGE
AND YOU NEVER KNOW, YOU OR
YOUR BABY MIGHT END UP
MAKING LIFELONG FRIENDS!

NO NEED TO BOOK - JUST TURN UP!



HORIZONS



DO YOU SUFFER WITH LOW MOOD?

FEEL LIKE YOU NEED SOME
SUPPORT?

HORIZONS IS A FREE,
FRIENDLY GROUP FOR ALL
PARENTS WHO ARE
STRUGGLING WITH THEIR
EMOTIONAL HEALTH AND
WELLBEING AND WOULD LIKE
SOME SUPPORT FROM OUR
FRIENDLY STAFF

WE OFFER A SAFE
ENVIRONMENT, USING
HOLISTIC METHODS TO SHOW
YOU HOW EVEN THE
SIMPLEST OF THINGS CAN
IMPROVE YOUR WELLBEING
AND HELP YOURSELF & YOUR
FAMILY TOO!

CONNECT WITH OTHERS.
HAVING A SUPPORT SYSTEM IS CRUCIAL
FOR GOOD MENTAL HEALTH. REACH OUT
TO FRIENDS, FAMILY, OR A MENTAL
HEALTH PROFESSIONAL IF YOU NEED TO
TALK OR RECEIVE GUIDANCE.

SCAN THE QR CODE TO BOOK ON OR
VISIT
WWW.LANCASHIRE.GOV.UK/EVENTS





ST ANNE'S

CATHOLIC PRIMARY SCHOOL



15/05/2026

Lancashire County Council

LANCASHIRE FAMILY HUB NETWORK

SEND

Peer Support Drop In

With Community Seniors/Family Hub Navigator

Every 3rd Wednesday of the month

9:30am – 11:30am
West Paddock Family Hub
PR25 1HR

Peer Support drop in for parents/carers of children with SEND

Partner agencies will join some of our drop ins, such as

SENDIAS, Key, Primary Mental Health Workers, ASD Pathway Navigator, Educational Psychologists, Barnardo's, Lancashire Positive Minds and Lancashire Parent Career Forum

LANCASHIRE FAMILY HUBS NETWORK

BABY & YOU

No need to book - just turn up!

Check out our timetable on

Baby weigh sessions on alternate weeks

WHY PLAY WITH US?
We provide lots of exciting activities for you and baby to support your child's brain development. The group provides professional and peer support for new parents/carers. Meet and network with other new parents/carers and their babies to play and discuss key subjects such as safer sleep, ICON, baby brain development, physical development and much more.

SUITABLE FOR NEWBORN - MOBILE BABIES

Lancashire County Council

FREE GROUP FOR MOBILE CHILDREN - 4 YEARS

MINI MOVE & GROOVE

These sessions support your child to adopt a healthy lifestyle through physical play and activities, including gross and fine motor skills, dance along songs, games and so much more!

FREE SNACK INCLUDED

CHECK OUT OUR TIMETABLE ON

LANCASHIRE FAMILY HUBS NETWORK

Lancashire County Council

Break Time

Fun group activities for children and young people with SEND in Lancashire

Don't forget!

Registrations will be open from Monday 27th October 2025 to Sunday 18th January 2026

Both new and current members must register!

www.lancashire.gov.uk/SEND

or scan:

Lancashire County Council

lancashire.gov.uk/SEND



WHAT'S ON... Regular Events

MONDAY	9.30-NOON	COFFEE LOUNGE
	10.00-11.30 2 nd Monday of month	LEGO (all welcome)
	9.00-NOON	MUMS & TOTS
	1.15-3.30 EVERY 2 WEEKS	WIDOWS WELCOME
	2.00-3.00	Do Fitness
TUESDAY	9.30-NOON	COFFEE LOUNGE
	5.30-7.30	DRAMA GROUP (over 16)
	3.30-5.30 1 st Tuesday of Month	LEGO (families)
	6.00 - 8.00 1 st Tuesday of Month	LEGO (Adults)
WEDNESDAY	11AM-2PM	WARM SPACE October - April
	12 NOON 1 ST WED OF MONTH	COMMUNITY LUNCH
THURSDAY	9.30-NOON	COFFEE LOUNGE
	11.15am-12.15pm	DO FITNESS
	1.00-3.00 2 ND THURS OF MONTH. BOOKING ESSENTIAL 07880790749	MUSIC & AFTERNOON TEA
	7.00-11.00 LAST THURS OF MONTH	CEILIDH CLUB
FRIDAY	9.30-NOON	COFFEE LOUNGE
	10.00-12NOON	MANKIND MEN'S GROUP